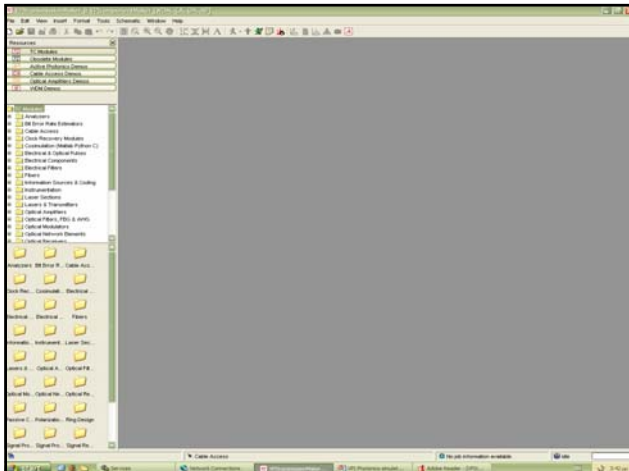
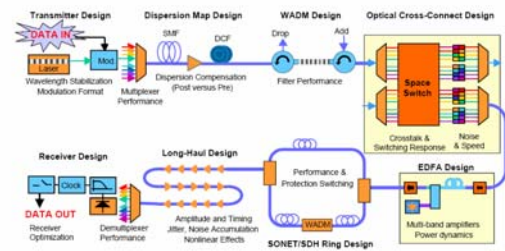


VPI Photonics simulator

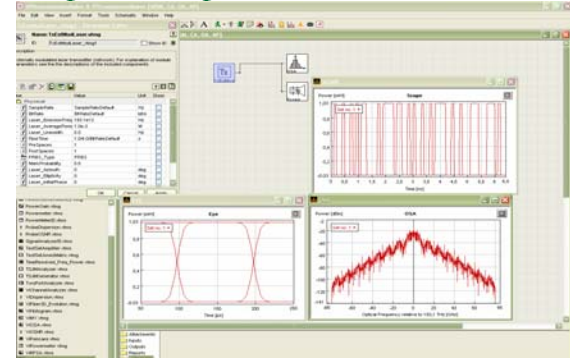
Applications of VPI simulator



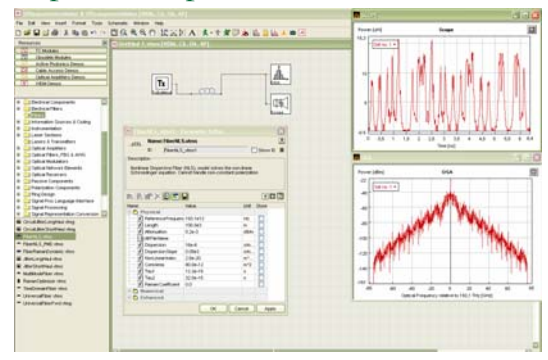
TC modules

- Analyzers
- Bit Error Rate Estimators
- Cable Access
- ...
- Fibers
- Laser
- Optical Amplifiers
- Optical Components

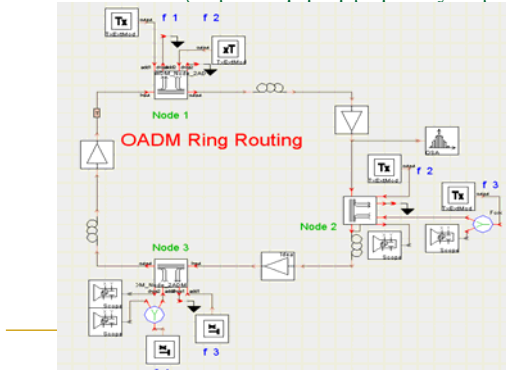
Simple Example



Simple Example with 100km



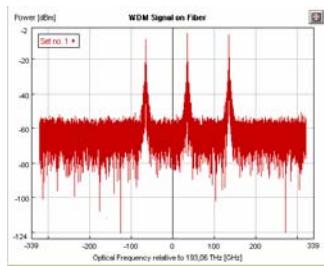
Άσκηση: Σχεδίαση οπτικού δακτυλίου με OADM και δρομολόγηση μήκους κύματος



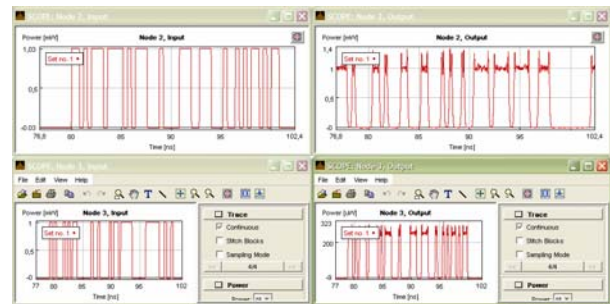
OADM Ring Routing

- Node 1 is communicating with node 2 on f_2 , with node 3 on f_1 .
- Node 2 is communicating with node 3 on f_3 , with node 1 on f_2 .
- Note that the output signal on node 2 has a delay of one time window and the signal has a negative time delay inside the time window because of chromatic dispersion.

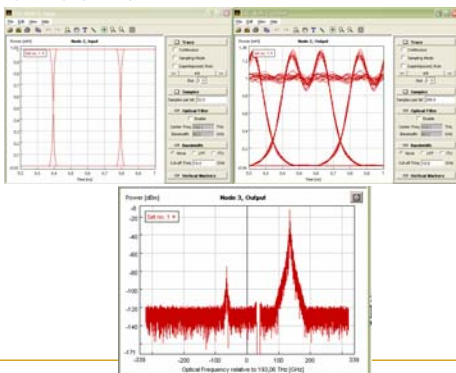
WDM signal on Fiber



Pulse trains I/O



Διάγραμμα ματιού και Οπτικό Φάσμα



TxExtModLaser

- Να χρησιμοποιήσετε τους πομπούς TxExtModLaser με
 - Sample Rate: 80e9
 - 2.5Gb/s, $f_1=193.1e12$, και $f_2, f_3 \pm 100\text{GHz}$ channel spacing
 - Ισχύς εξόδου 1mW
 - Laser linewidth, 0
 - Rise time 2.5e-11
- PreSpaces, PostSpaces:4
- PRBS type: PRBS

