

INTERIOR ARCHITECTURE

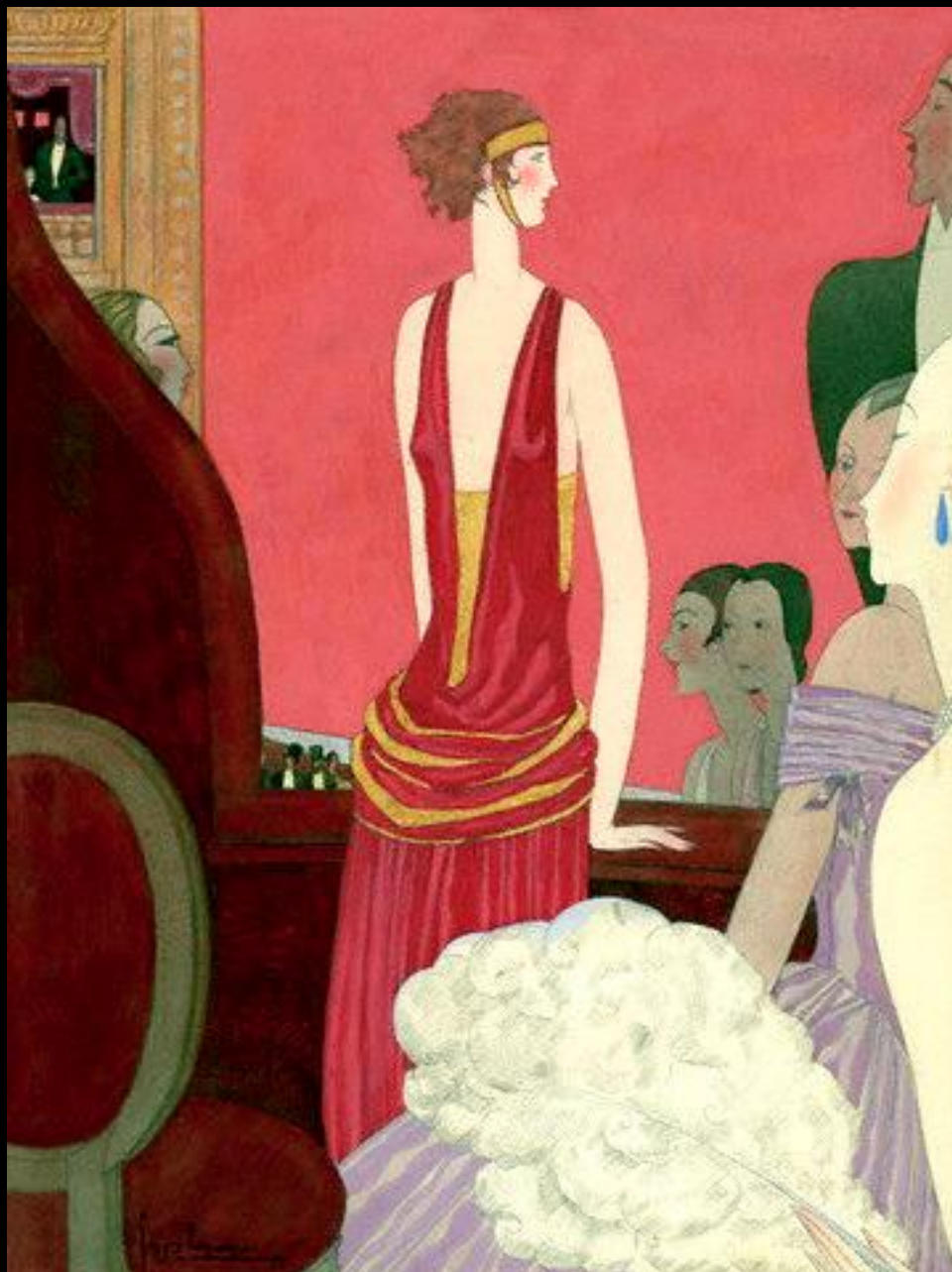
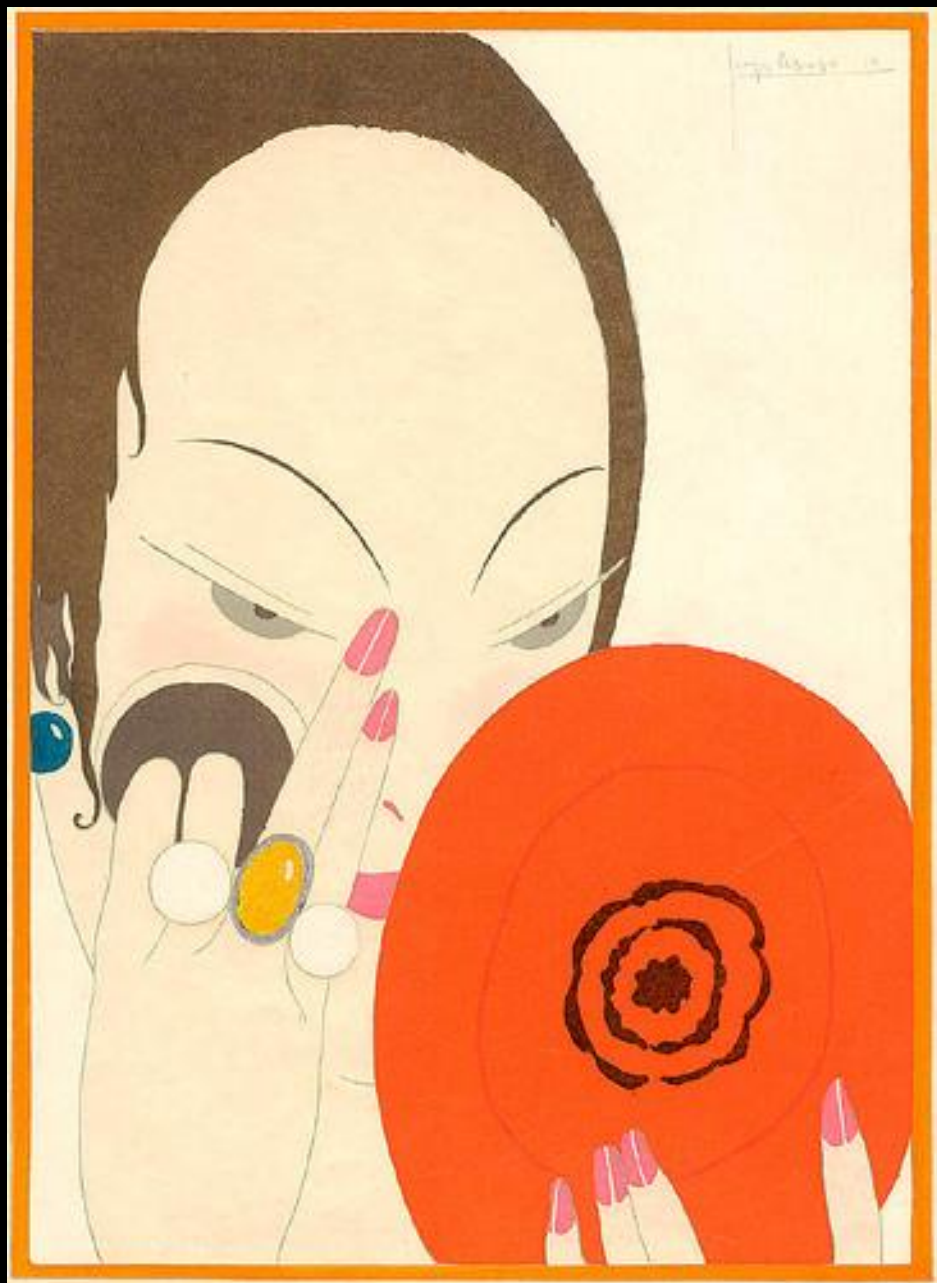
+

INDUSTRIAL DESIGN 06

- **DECORATIVE + INDUSTRIAL DESIGN**
- **ART DECO**
- **ÉMILE-JACQUES RUHLMANN**
 - **PIERRE CHAREAU**
 - **EILEEN GRAY**
 - **LE CORBUSIER**
 - **CHARLOTTE PERRIAND**
 - **JEAN PROUVÉ**

ART DECO - EUROPE







UN PANORAMA ET UN TOURNOI DE LÉGENDE

13-21 AVRIL 2002



MONTE-CARLO COUNTRY CLUB

DEPUIS 1928

G O L F



Zetta

J. BOUTIER



VINS

rouge rose blanc

CAMP ROMAIN



LIQUEUR CRUX



179, Boulevard Saint-Germain - 75006



BAR A VIN DEPUIS 1957
80, RUE DES SAINTS-PÈRES - 75007





NORMANDIE

C^{IE} G^{LE} TRANSATLANTIQUE

LE HAVRE — SOUTHAMPTON — NEW-YORK

SERVICE RÉGULIER
PAR PAQUEBOTS DE LUXE
ET À CLASSE UNIQUE



The building is a three-story Art Deco structure with a white facade and prominent green window frames. It features rounded corners, a central vertical tower with a clock, and large curved windows. The ground floor has a central entrance with a glass door and a large window, flanked by two smaller glass doors. The second and third floors have large, curved windows with green frames. The central tower has a clock face on the second floor and a decorative top section with a grid pattern. The building is surrounded by a lawn and hedges.

A tall streetlight pole is visible on the left side of the image, with a smaller one further back. There are also some utility poles and wires visible in the background.

A yellow triangular warning sign with a black border and a black symbol is visible on the left side of the image. Below it is a blue rectangular sign with white text, likely a street name or direction sign.

A streetlight pole is visible on the right side of the image, with a lamp head pointing towards the building.

Another building is visible on the right side of the image, partially obscured by the main building. It has a similar Art Deco style with white walls and green window frames.



ÉMILE-JACQUES RUHLMANN









PIERRE CHAREAU



gettyimages
DEA / G. DAGLI ORTI



























PIERRE CHAREAU 1931

COLL - BIJVOËT

FERS - DALBET



PIERRE CHAREAU 1929
CELL - BIJVOET
FERN. - DAAKST.

VF61













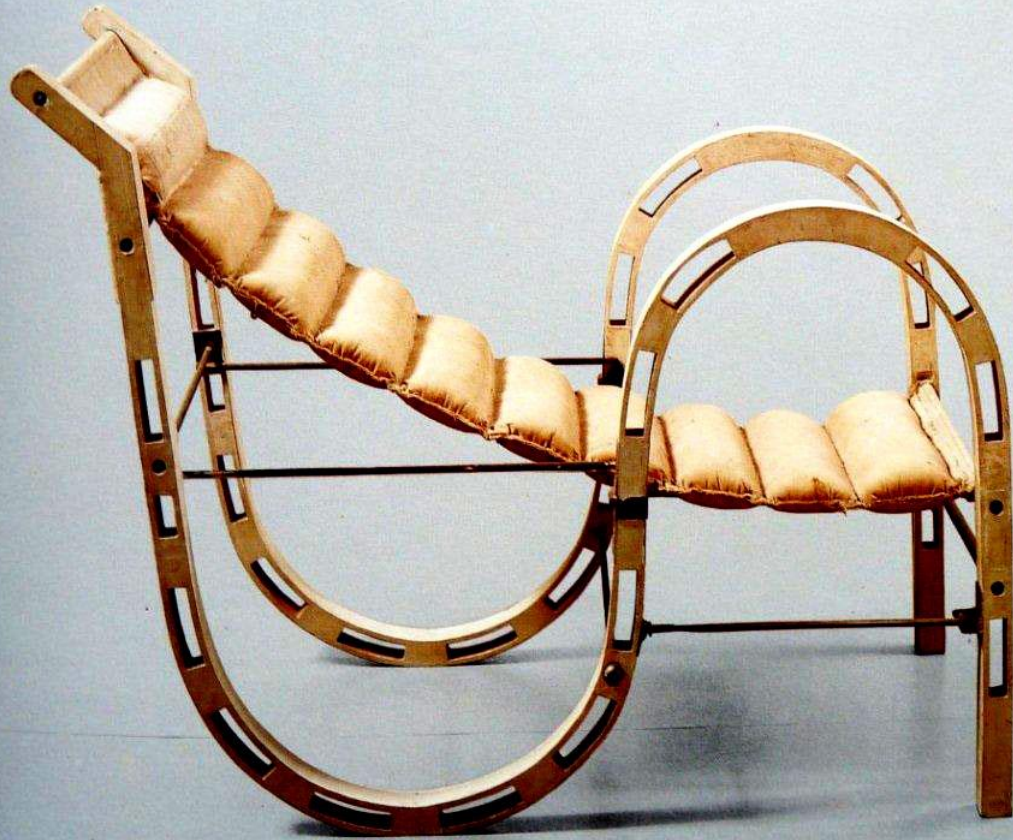
EILEEN GRAY













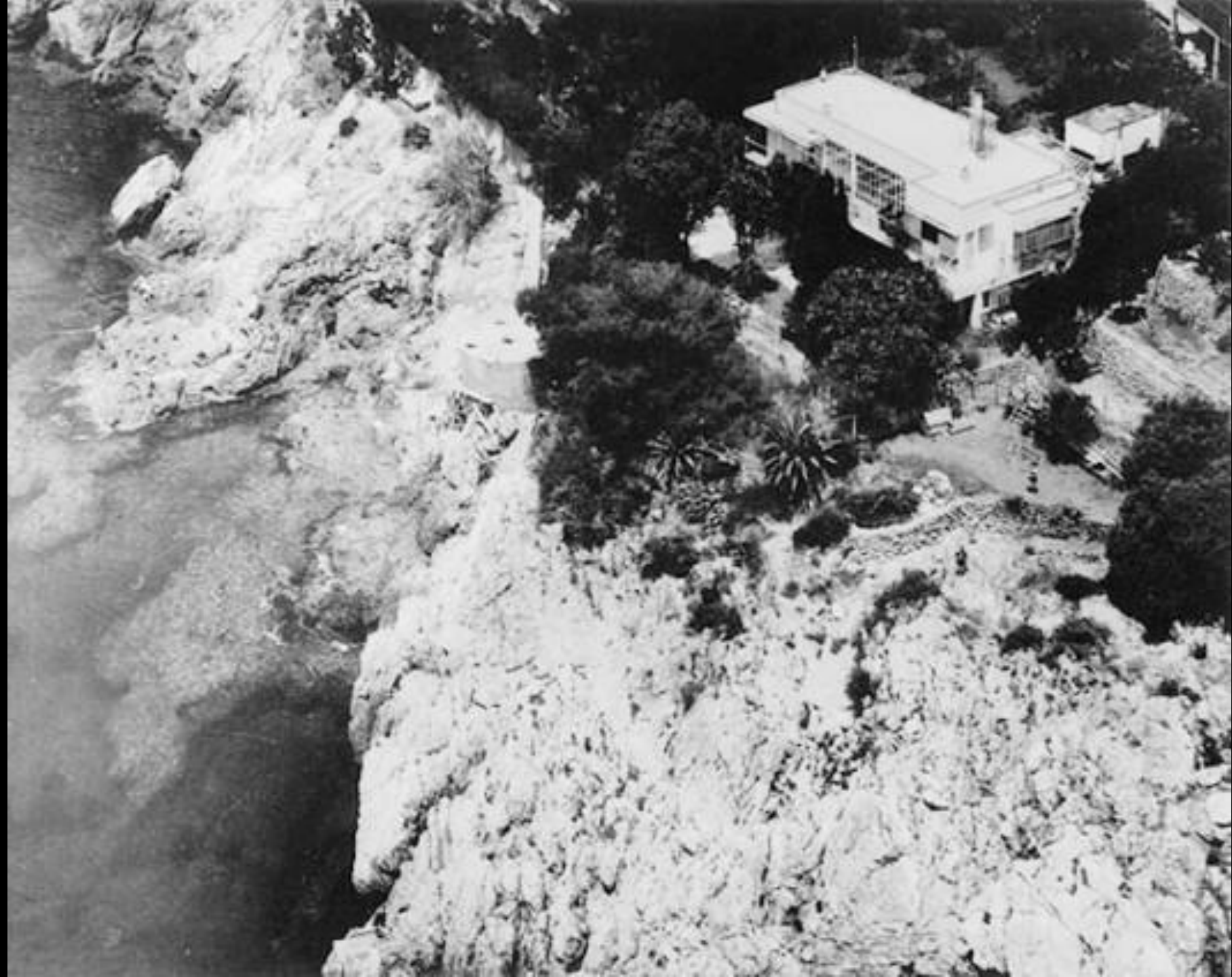








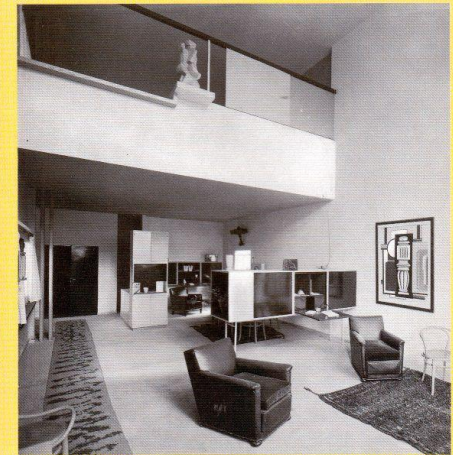






LE CORBUSIER

LE CORBUSIER L'ART DÉCORATIF D'AUJOURD'HUI



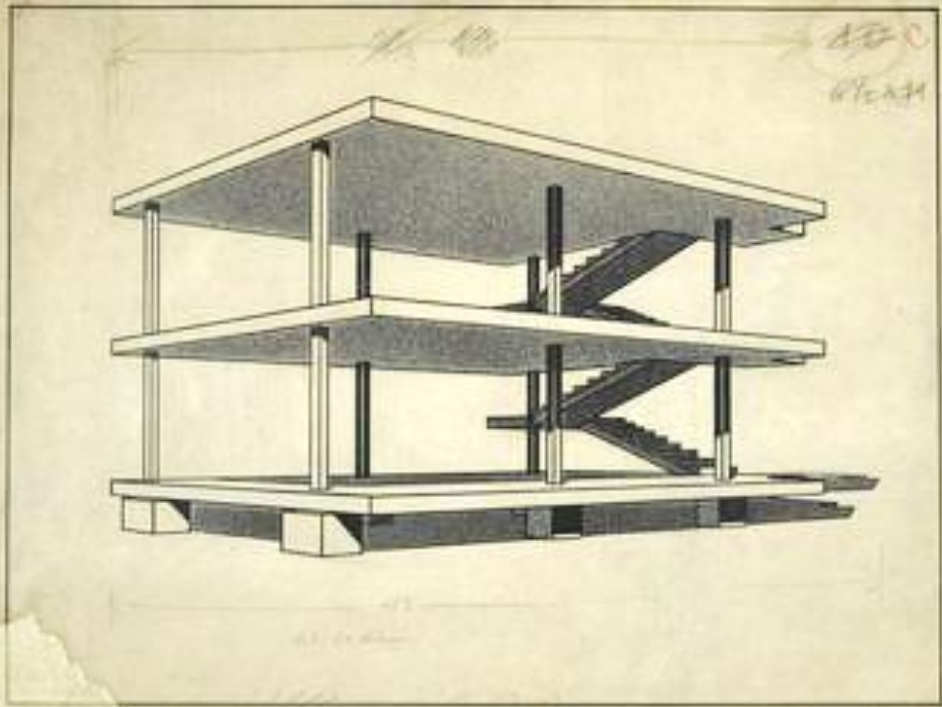
Champs
Flammarion







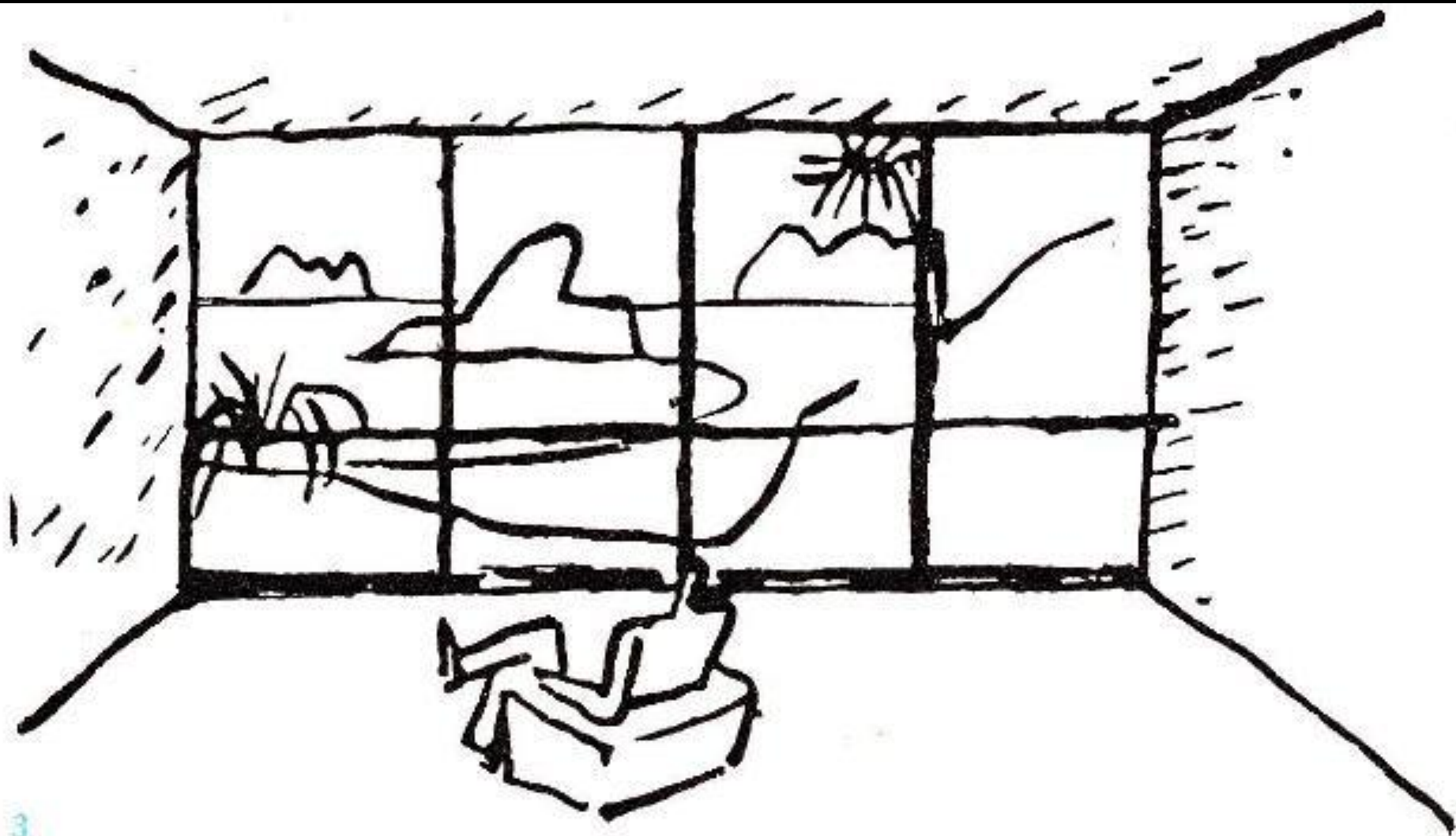




1920











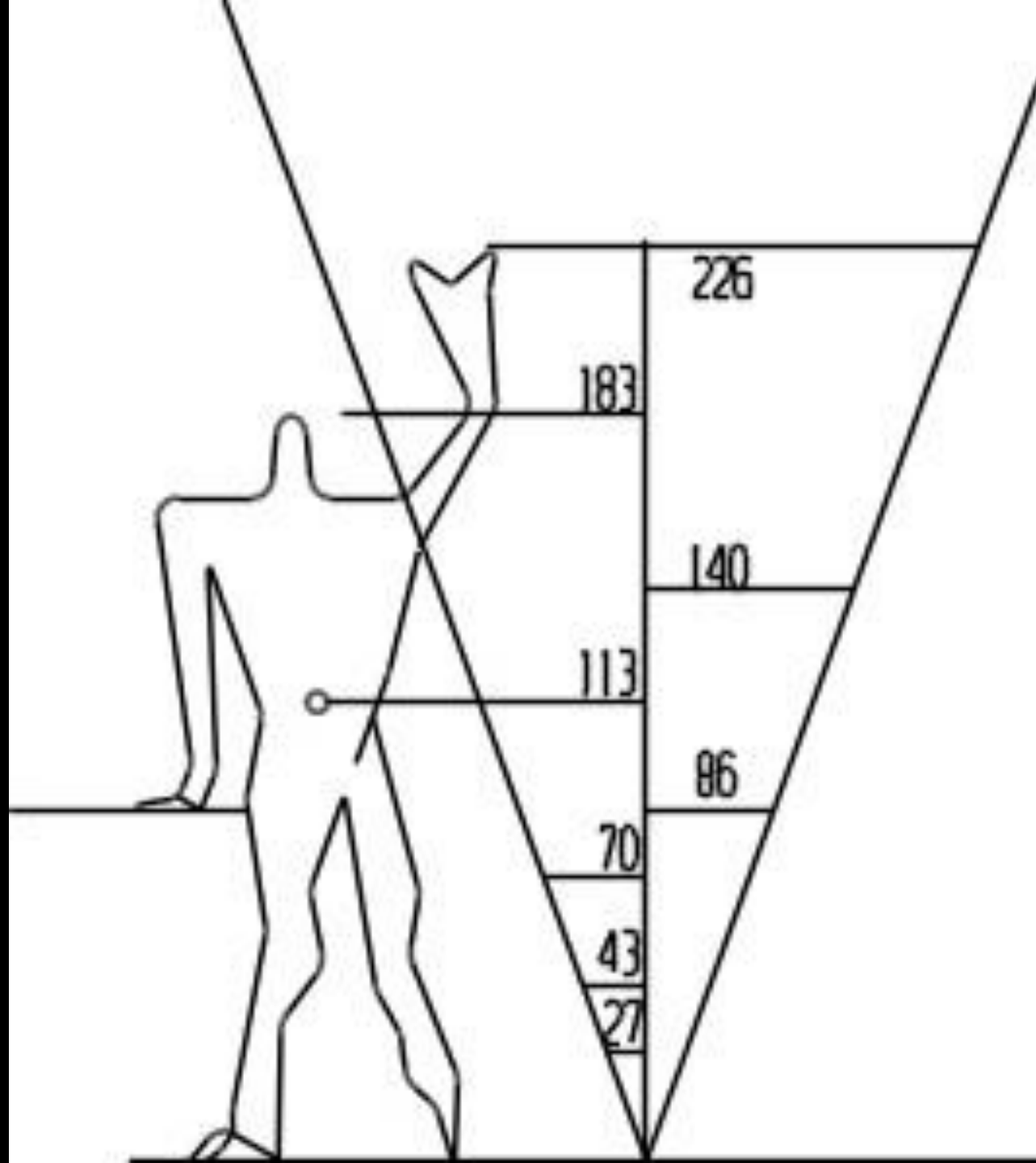
















MEMBER

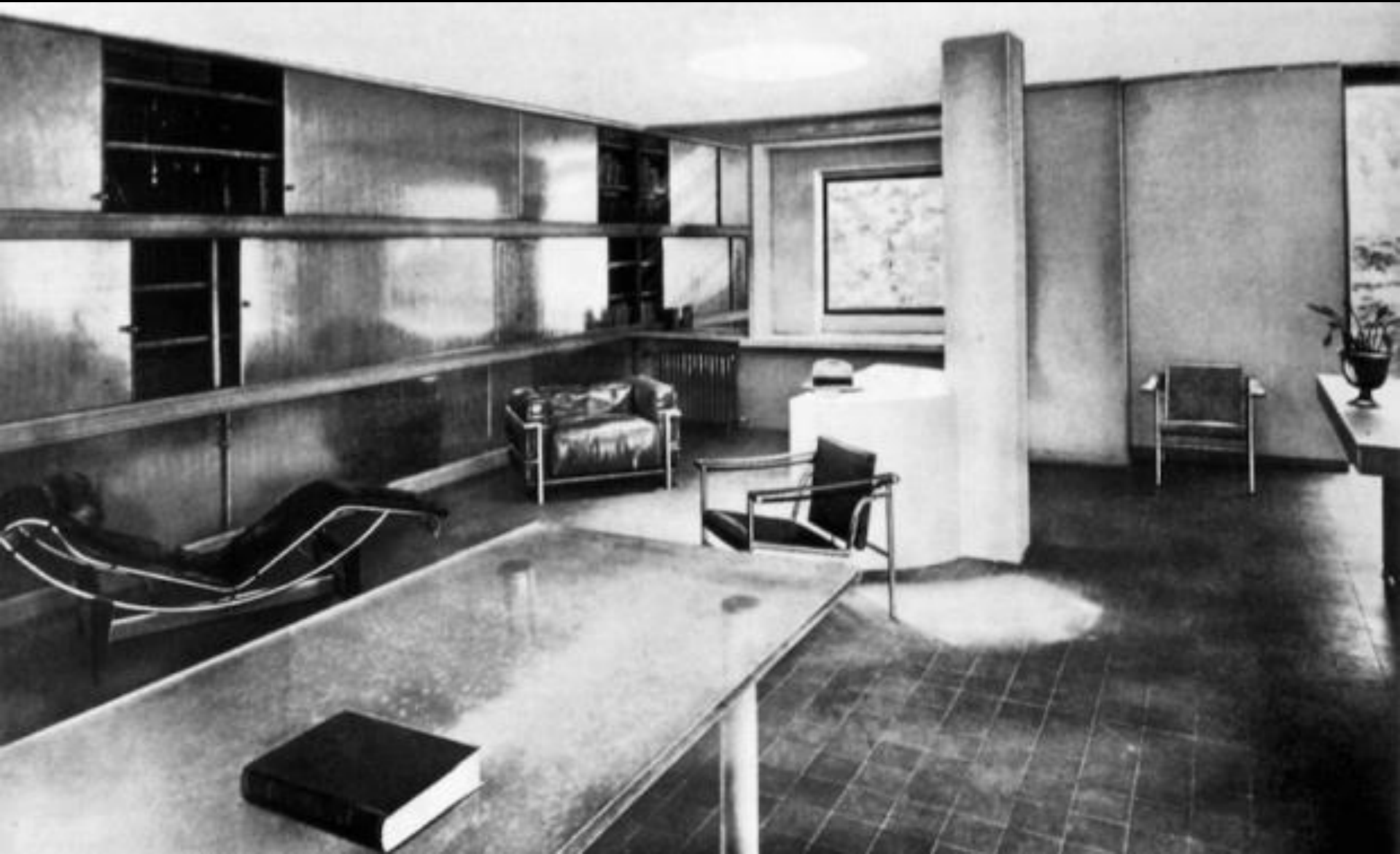






CHARLOTTE PERRIAND







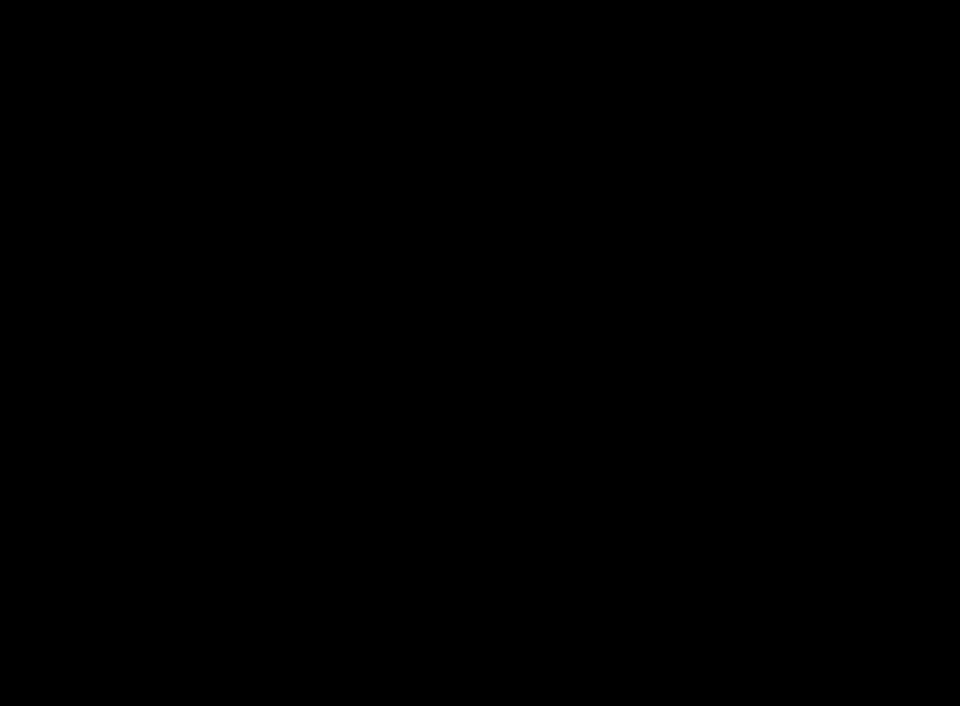












JEAN PROUVÉ













Pose des panneaux
à hublots»



