

INTERIOR ARCHITECTURE

+

INDUSTRIAL DESIGN 02

- **STANDARDIZATION + INDUSTRIAL DESIGN**
 - **THONET**
 - **DEUTSCHE WERKBUND**
 - **PETER BEHRENS**



KMS8321a 45



INGVAR KAMPRAD
1926-2018







IKEA Job Interview





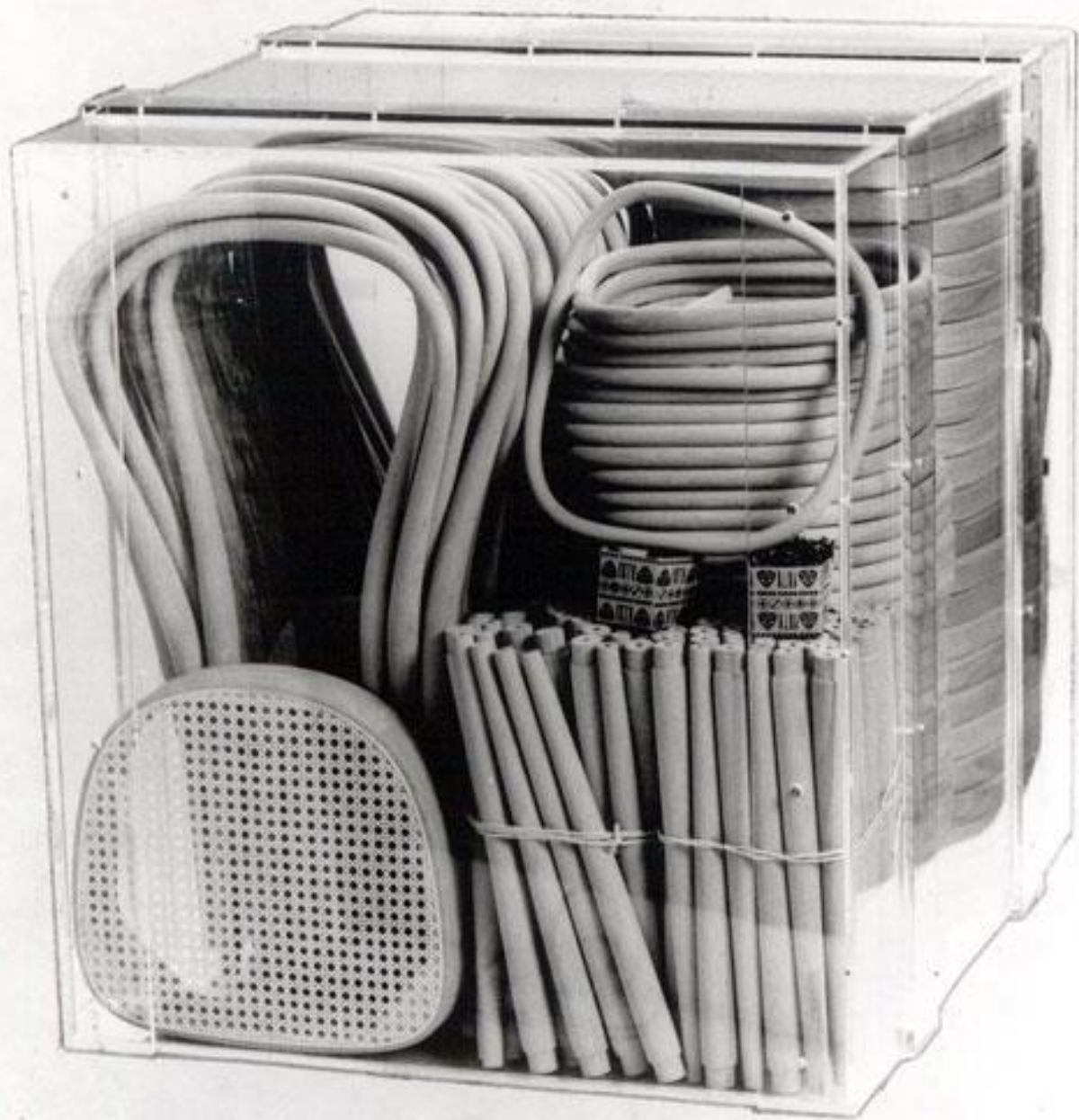
MICHAEL THONET 1796-1871



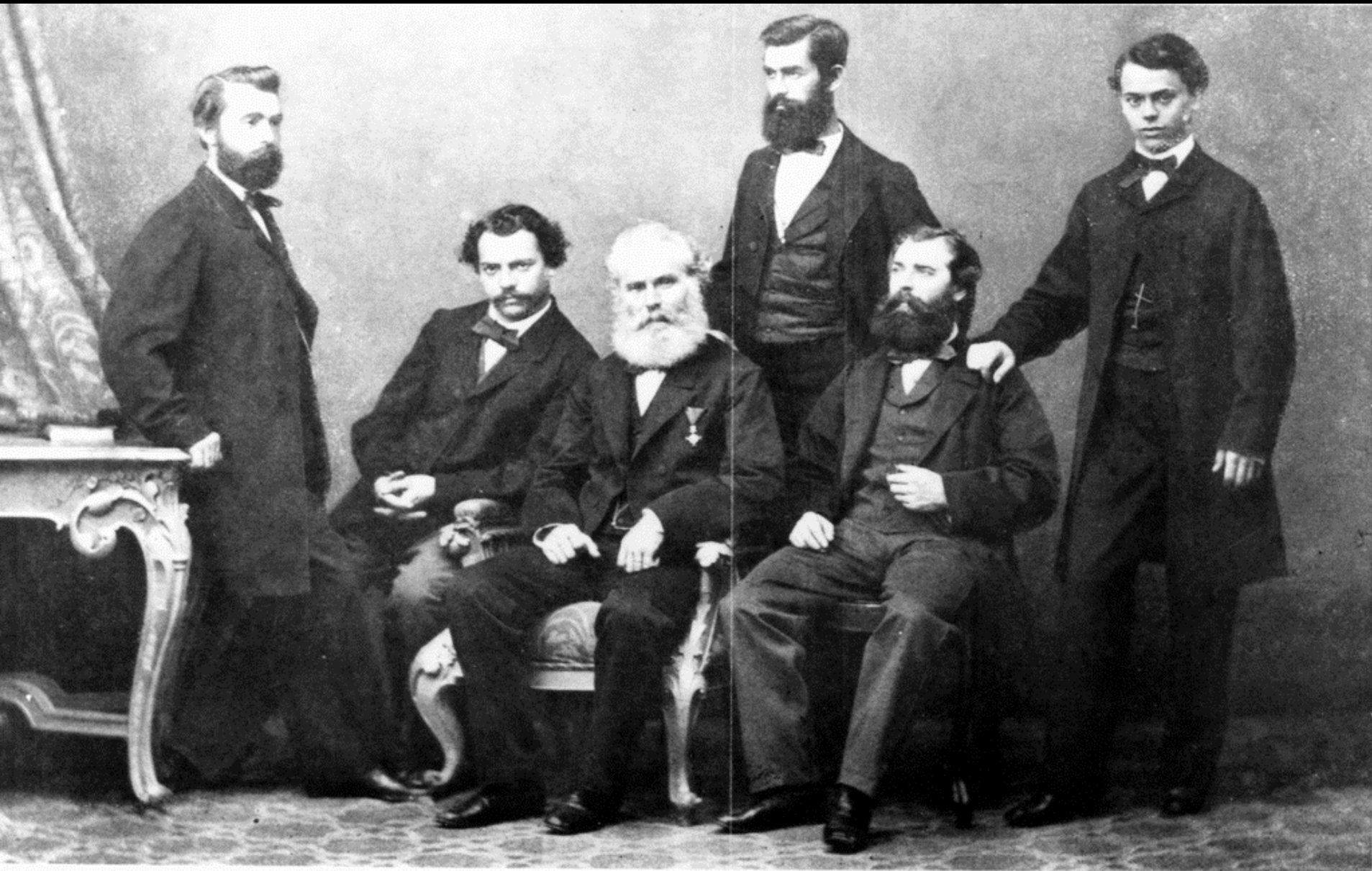
1859 THONET No. 14







GEBRUDER THONET



Michael. jun.

Josef

Michael sen.

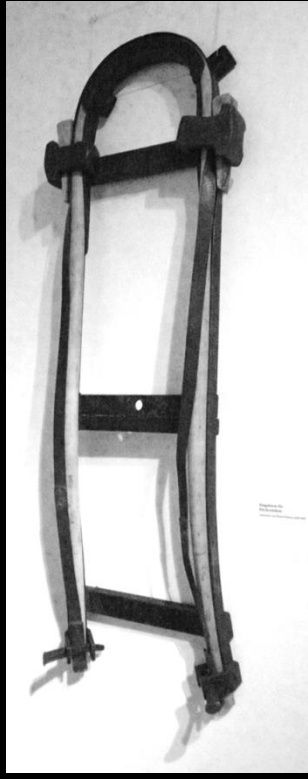
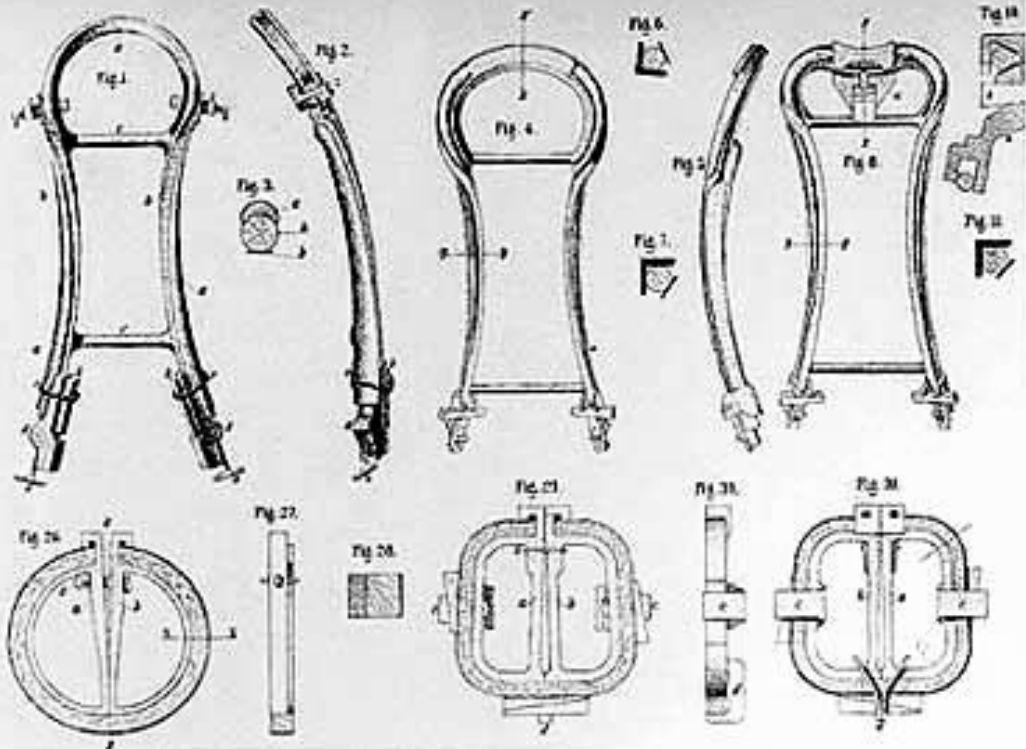
August

Franz

Jakob

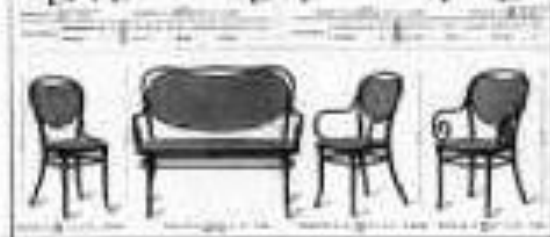
(Nach einem Lichtbild vom Ende der Fünfziger Jahre des vorigen Jahrhunderts.)

Michael Thonet und seine Söhne.

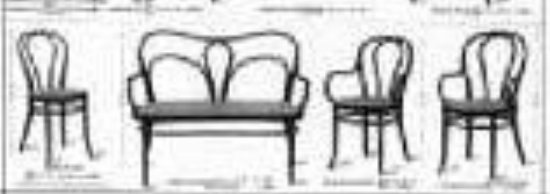
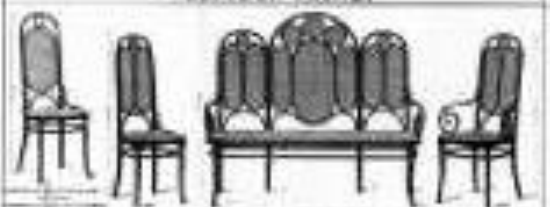


THONET

GERMANY THONET



GERMANY THONET



GERMANY THONET



GERMANY THONET



GERMANY THONET



GERMANY THONET



GERMANY THONET



GERMANY THONET



GERMANY THONET

















THONET 214





1859



214



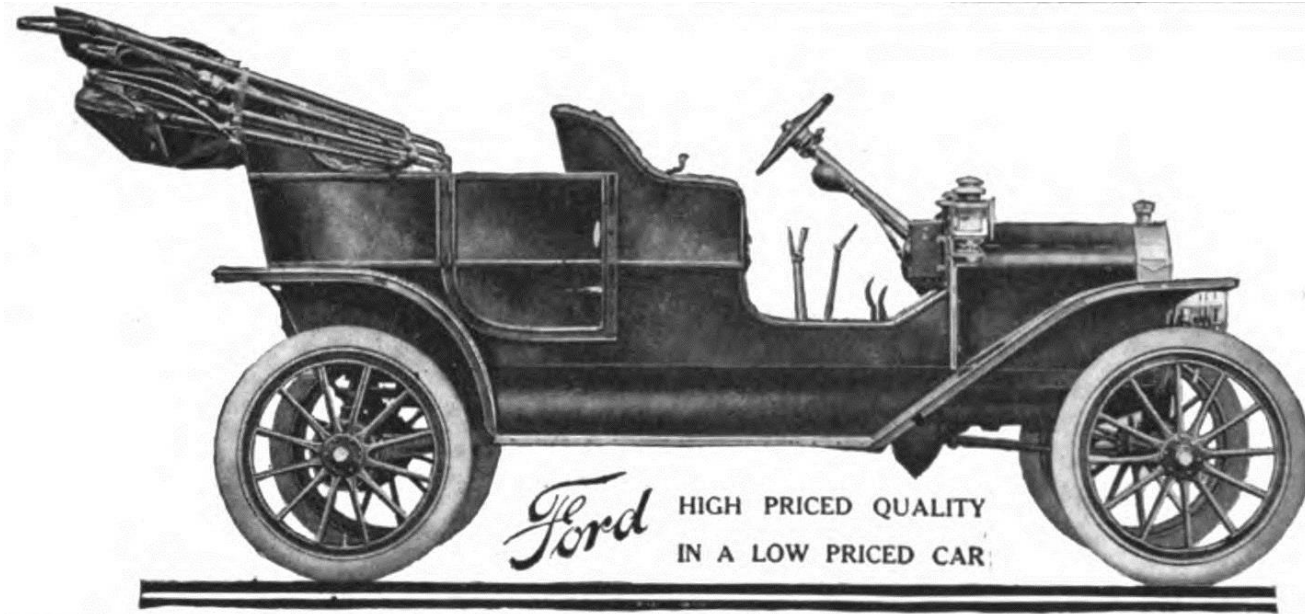
masterblog.front.v



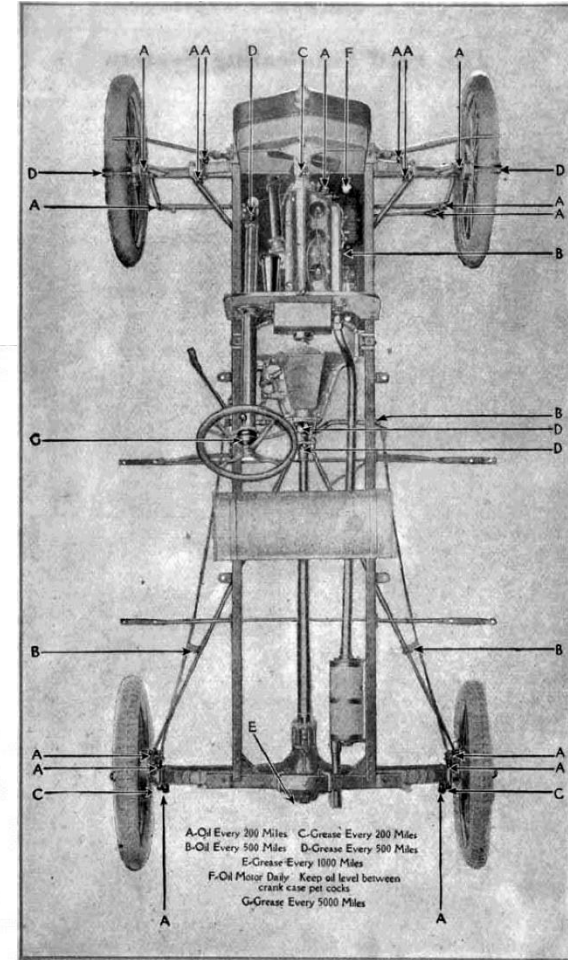
HENRY FORD 1863-1947



FORD MODEL 'T' 1908-1927

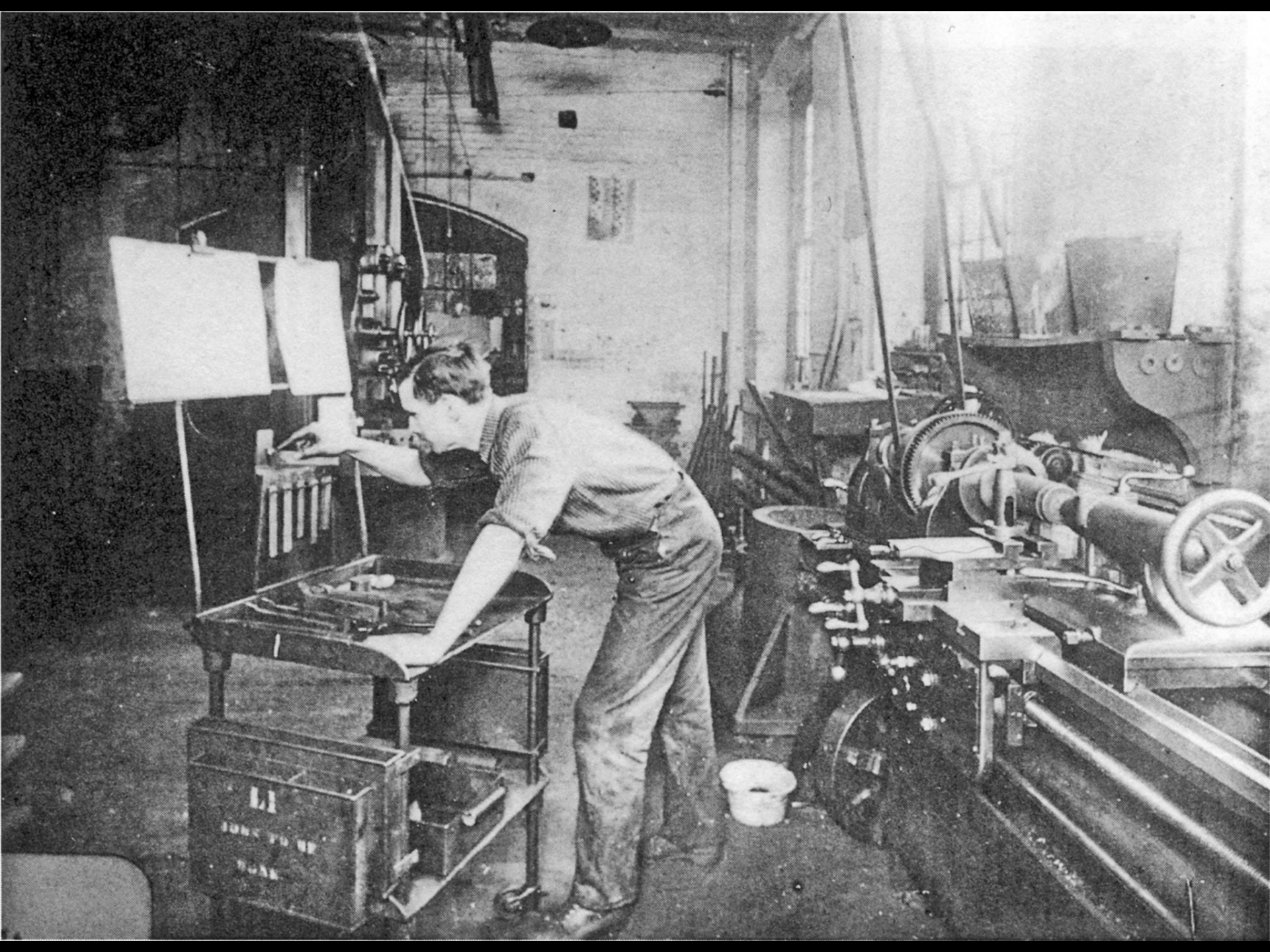


Ford HIGH PRICED QUALITY
IN A LOW PRICED CAR.









*The Principles of
Scientific Management*

BY

FREDERICK WINSLOW TAYLOR, M.E., Sc.D.

PAST PRESIDENT OF THE AMERICAN SOCIETY OF
MECHANICAL ENGINEERS

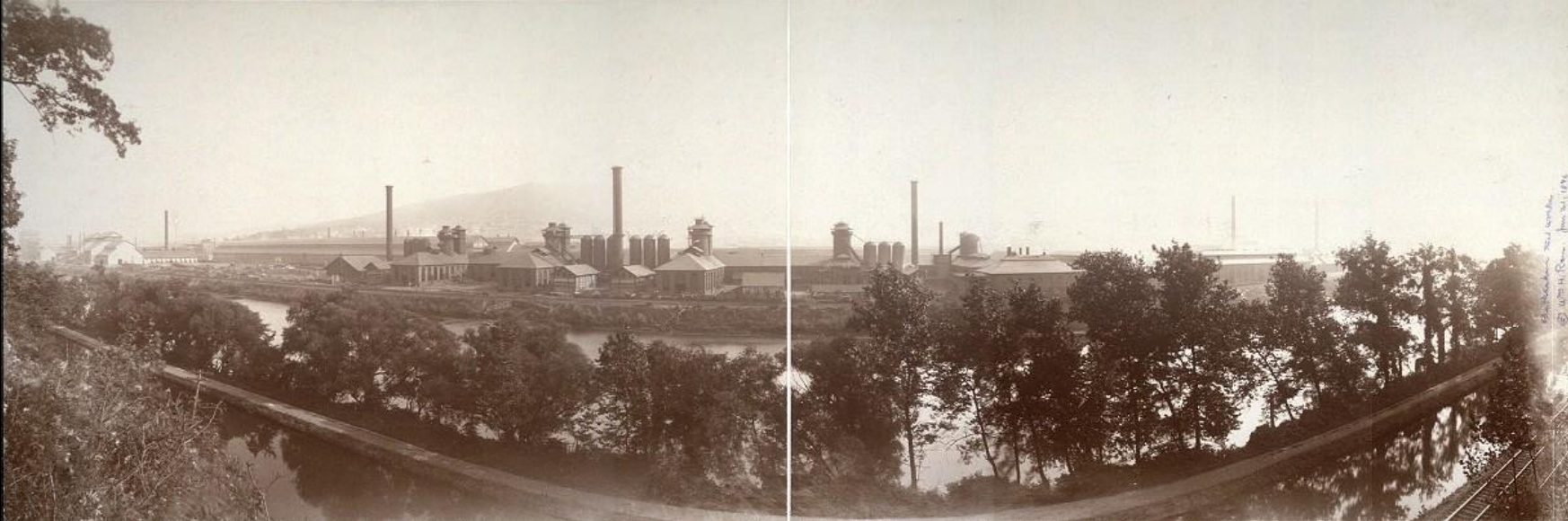


FREDERICK TAYLOR
1864-1920

HARPER & BROTHERS PUBLISHERS

NEW YORK AND LONDON

1919



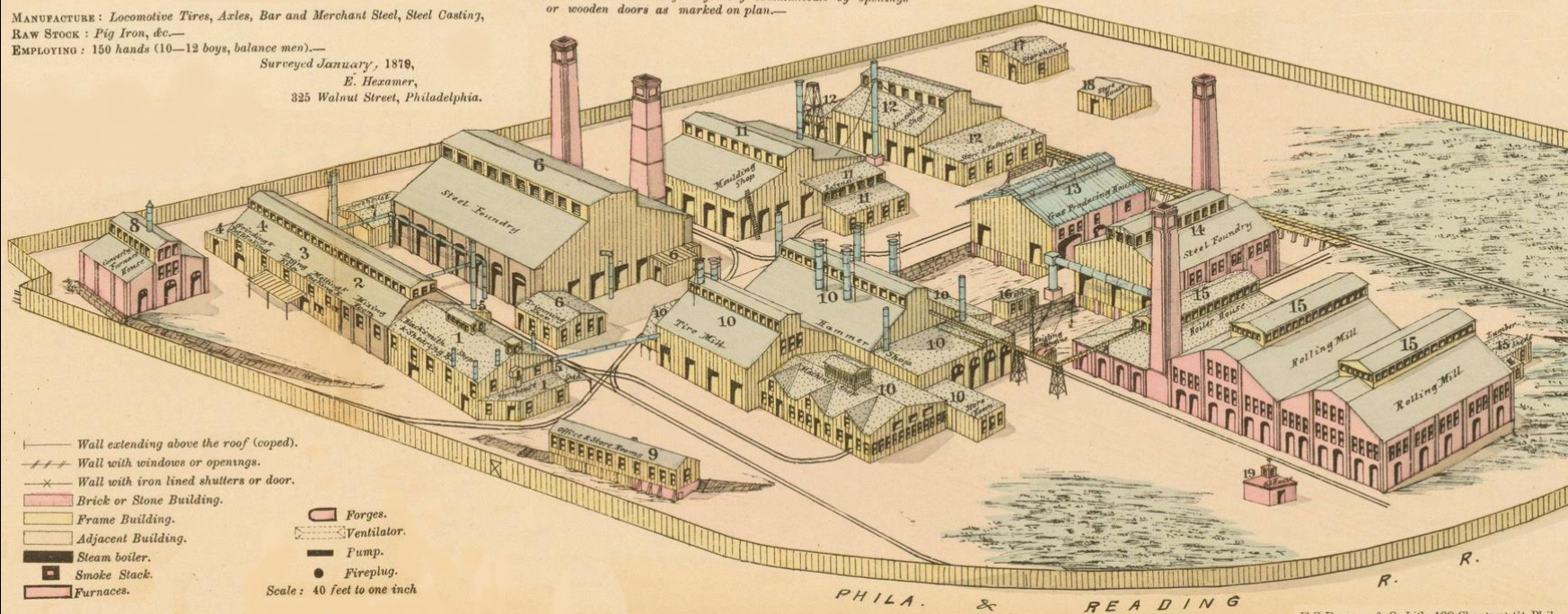
Midvale Steel Works,

Nicetown, 28th Ward, Philadelphia.

MANUFACTURE : Locomotive Tires, Axles, Bar and Merchant Steel, Steel Casting,
 RAW STOCK : Pig Iron, &c.—
 EMPLOYING : 150 hands (10—12 boys, balance men).—
 Surveyed January, 1879,
 E. Hezamer,
 325 Walnut Street, Philadelphia.

OWNED : by a corporation ; Wm. Sellers, President.—
 SUPERINTENDENT : not interested in the profits of the business.—
 NAME : Midvale Steel Works.—
 LOCATION : Situated in Nicetown, 28th Ward, Phila , Pa.—
 AGE : Buildings erected from 1869—1871.—
 CONSTRUCTION : Good.—
 COMMUNICATION : Buildings adjoining communicate by openings
 or wooden doors as marked on plan.—

POWER : Steam.—
 HEIGHT : various, from 10'—25' to eaves and from 20'—50' to peak of roof.—
 LENGTH : See plan.—
 WALLS : Brick wall mostly 21" thick with 21" pilasters.—
 ROOF : Of metal, slate or gravel: corrugated iron roof and iron roof
 trussing in gas producing house, No. 13.—



The Protestant Ethic and the Spirit of Capitalism

33 languages ▼

Article Talk

Read Edit View history

From Wikipedia, the free encyclopedia

The Protestant Ethic and the Spirit of Capitalism (German: *Die protestantische Ethik und der Geist des Kapitalismus*) is a book written by **Max Weber**, a German **sociologist**, economist, and politician. Begun as a series of essays, the original German text was composed in 1904 and 1905, and was translated into English for the first time by American sociologist **Talcott Parsons** in 1930.^[1] It is considered a founding text in **economic sociology** and a milestone contribution to **sociological thought** in general.

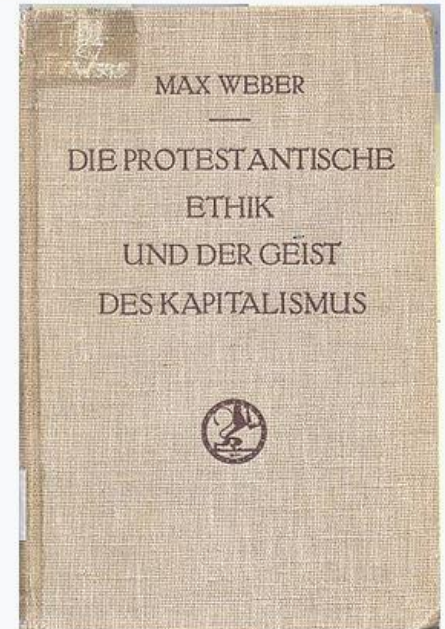
In the book, Weber wrote that capitalism in **Northern Europe** evolved when the **Protestant** (particularly **Calvinist**) ethic influenced large numbers of people to engage in work in the secular world, developing their own **enterprises** and engaging in trade and the accumulation of wealth for investment. In other words, the **Protestant work ethic** was an important force behind the unplanned and uncoordinated emergence of modern **capitalism**.^[2] In his book, apart from Calvinists, Weber also discusses **Lutherans** (especially **Pietists**, but also notes differences between traditional Lutherans and Calvinists), **Methodists**, **Baptists**, **Quakers**, and **Moravians** (specifically referring to the **Herrnhut**-based community under **Count von Zinzendorf**'s spiritual lead).

In 1998, the **International Sociological Association** listed this work as the fourth most important sociological book of the 20th century, after Weber's *Economy and Society*, Mills' *The Sociological Imagination*, and Merton's *Social Theory and Social Structure*.^[3] It is the 8th most cited book in the social sciences published before 1950.^[4]

Summary [edit]

Basic concepts [edit]

The Protestant Ethic and the Spirit of Capitalism

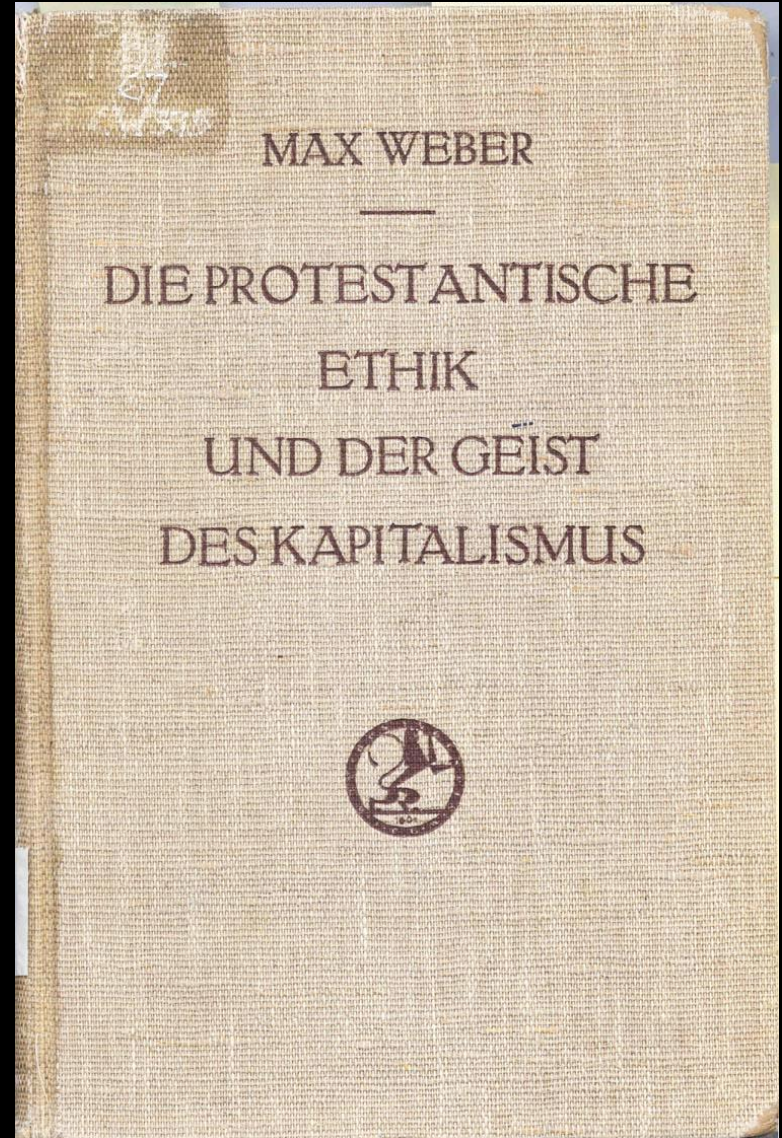


Cover of the German edition from 1934

Author	Max Weber
Original title	<i>Die protestantische Ethik und der Geist des Kapitalismus</i>
Country	Germany

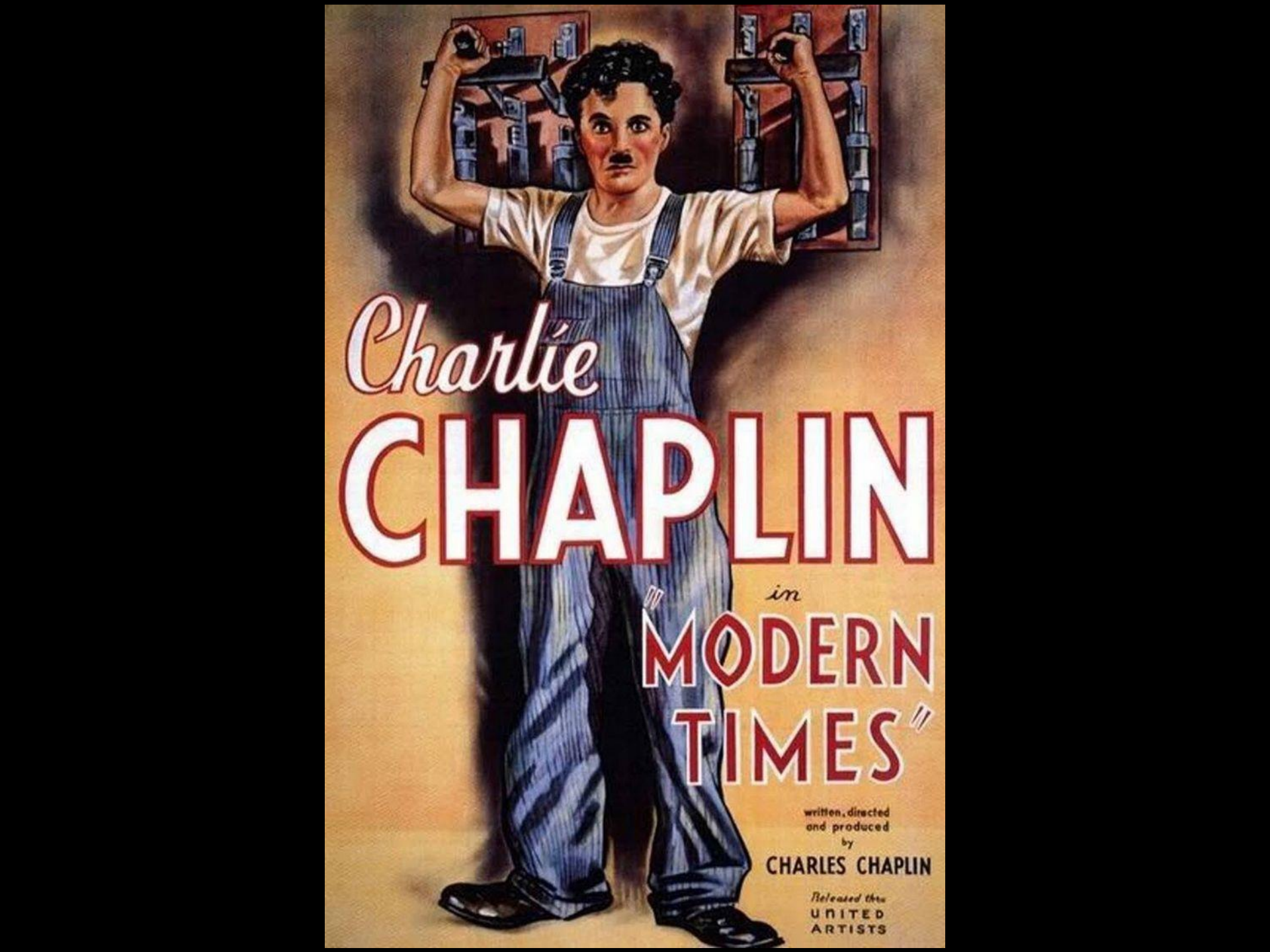


MAX WEBER
1864-1920



MAX WEBER
—
DIE PROTESTANTISCHE
ETHIK
UND DER GEIST
DES KAPITALISMUS



A full-body illustration of Charlie Chaplin as the Tramp character. He is wearing his signature white short-sleeved shirt, blue striped overalls, and black shoes. He has a small mustache and is looking upwards with a slightly concerned expression. He is holding two large, industrial-looking tools, possibly wrenches or sockets, one in each hand, raised above his head. The background is a plain, light-colored wall with a wooden workbench or shelf behind him, holding various tools and parts.

Charlie
CHAPLIN
in
**MODERN
TIMES**

written, directed
and produced
by

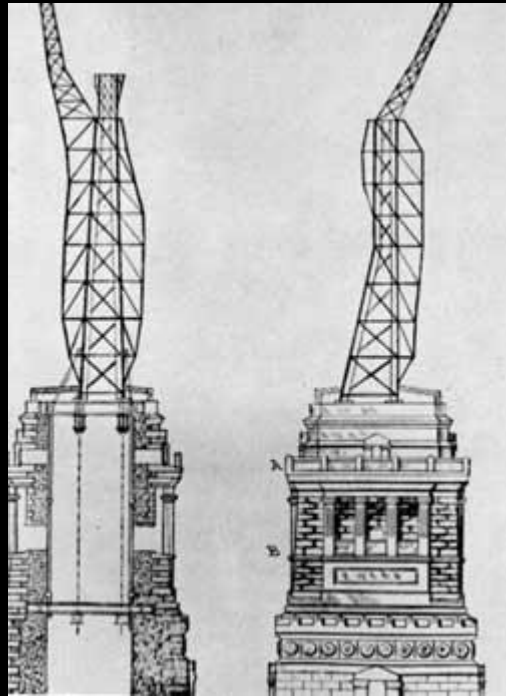
CHARLES CHAPLIN

Released thru
**UNITED
ARTISTS**



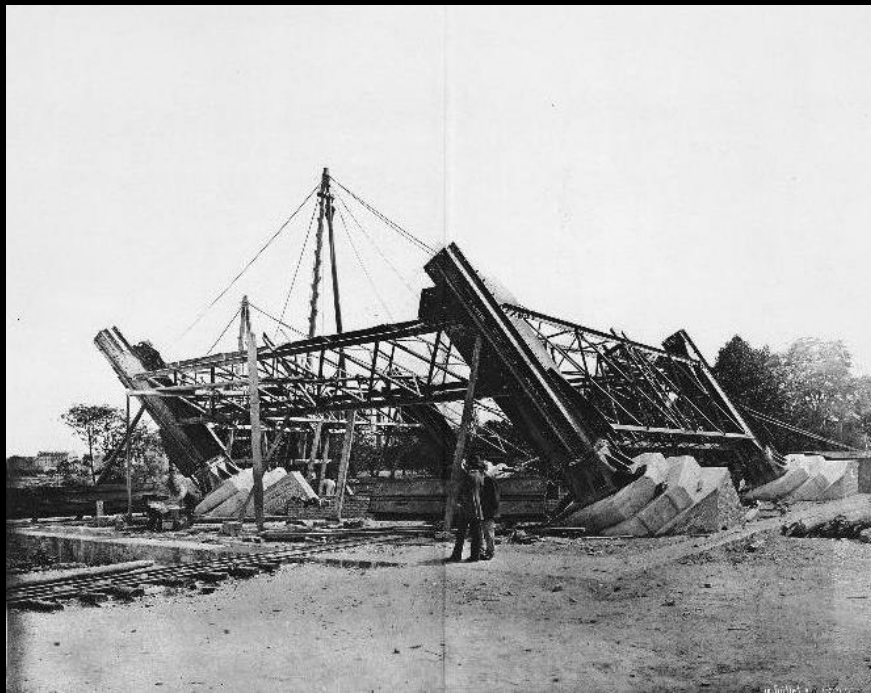
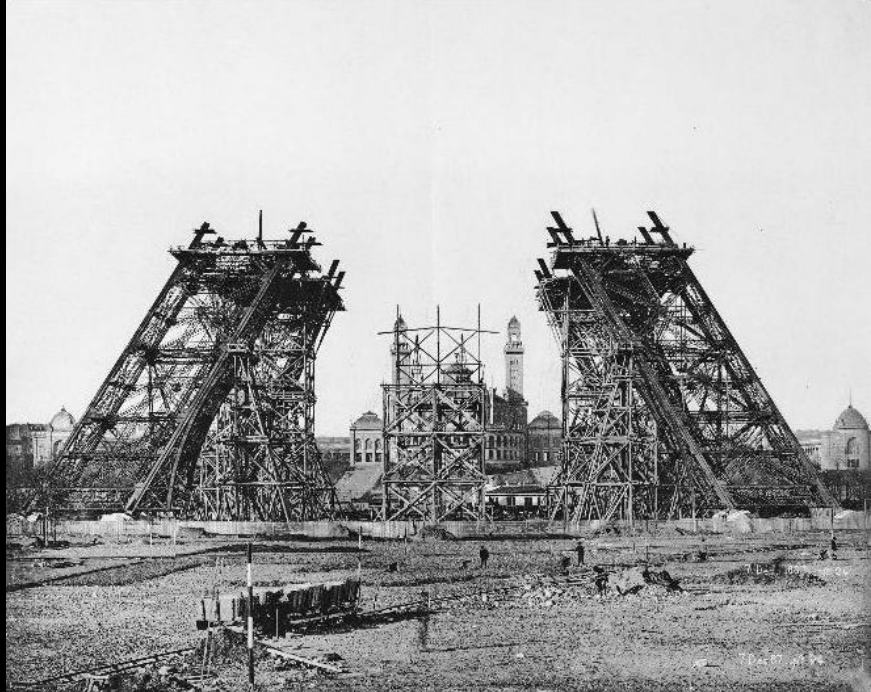








1889 PARIS EXHIBITION, EIFFEL TOUR





DEUTSCHE WERKBUND



DEUTSCHE WERKBUND-
AUSSTELLUNG

KUNST IN HANDWERK,
INDUSTRIE UND HANDEL · ARCHITEKTUR

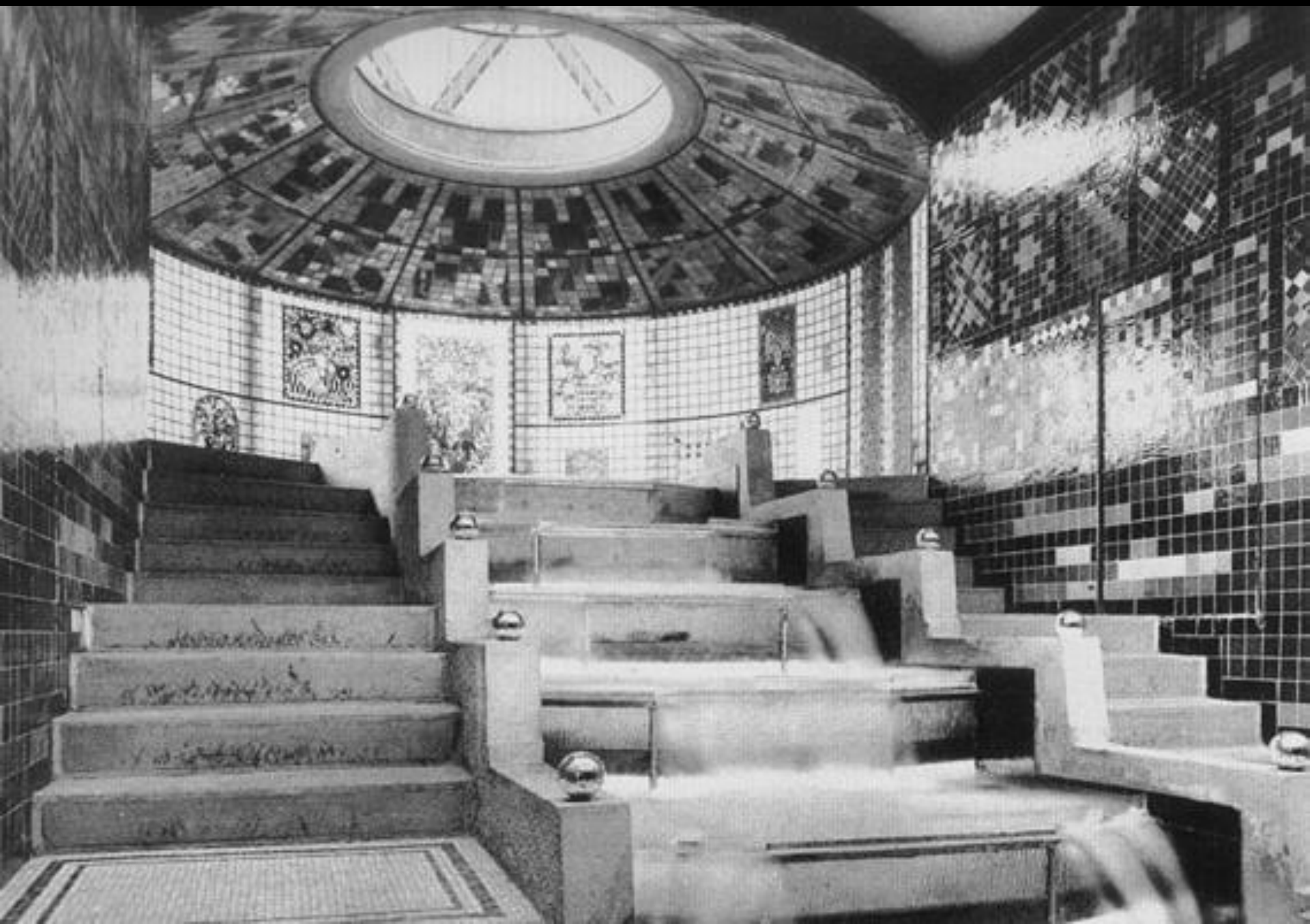
MAI

CÖLN 1914

OCT.



BRUNO TAUT, COLOGNE 1914



HERMANN MUTHESIUS



HENRY VAN DE VELDE

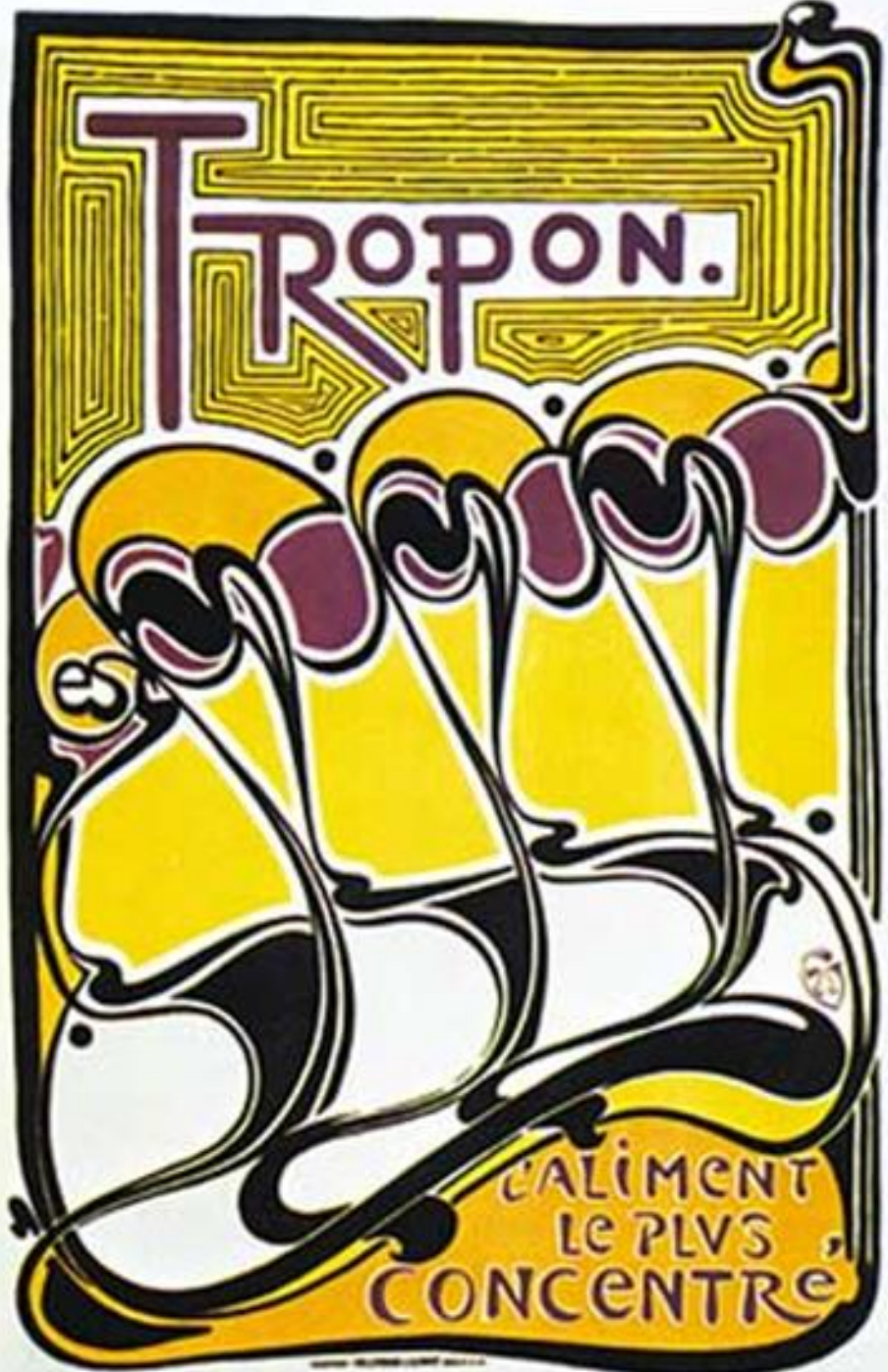








HENRY VAN DE VELDE



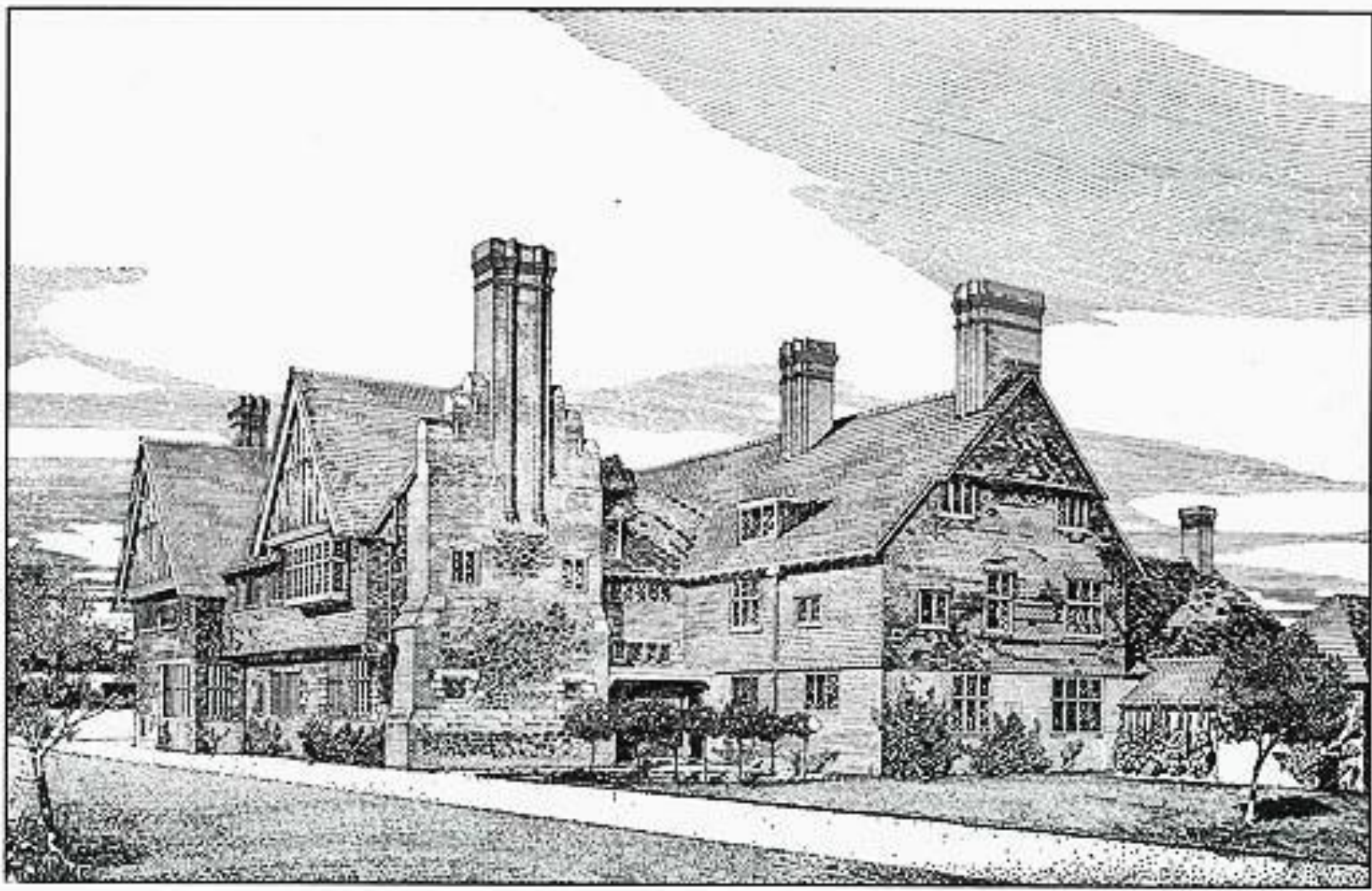






HERMANN MUTHESIUS

232. The Hallams, Surrey. Built by Richard Norman Shaw.









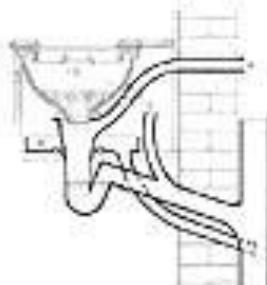
THE ENGLISH HOUSE

Volume I: Development



HERMANN MUTHESIUS

the reputation for the greatest perfection in England, namely, the valve closet (illus. 249-51). As a rule it is prescribed in estimates for all the better houses in the form of Hellyer's 'Optimus' closet. It is very complicated in its construction and needs to be housed in a wooden casing in order to conceal its complex mechanism. Its principal advantage lies in the fact that the bowl contains as

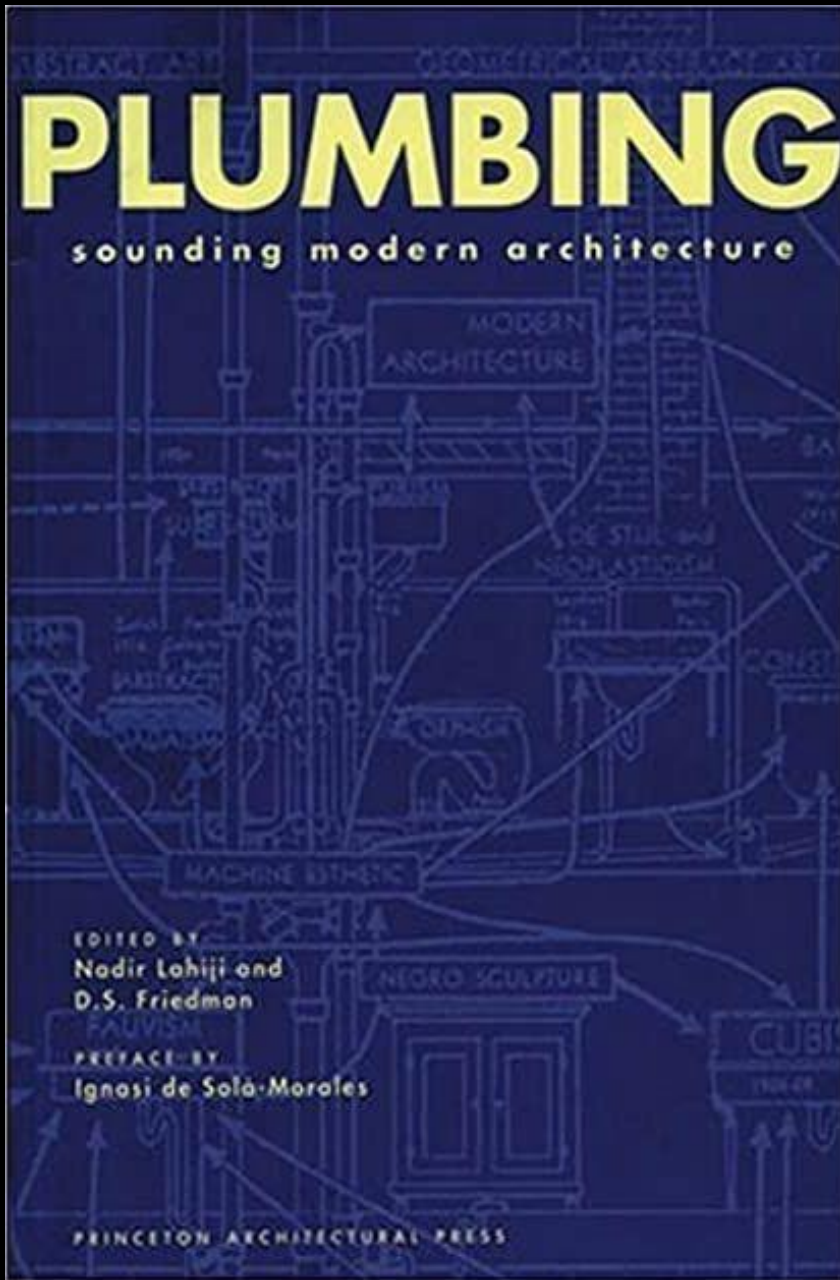


much as 4 to 5 litres of water that is retained in the pan by means of a valve. When a handle is pulled, this water is discharged with great force into a water trap, which is thoroughly emptied. When compared with the wash-down closet, the valve closet has the great advantage of soundlessly removing all solid and liquid filth and of providing a double safeguard against gases from the soil-pipe. It requires a ventilation pipe between the pan and the water trap (illus. 249, A), a tray (B) to guard against leaks, the usual ventilation pipe for the water trap (C), an overflow (D) that has its own water trap and that empties into pipe A and, finally, the apparatus necessary to replace the water that has been flushed away. The amount of replacement water can be set by the user, a point that many people will see as an advantage. But the closet is also used in connection with a cistern that holds some 25 or 30 litres of water.



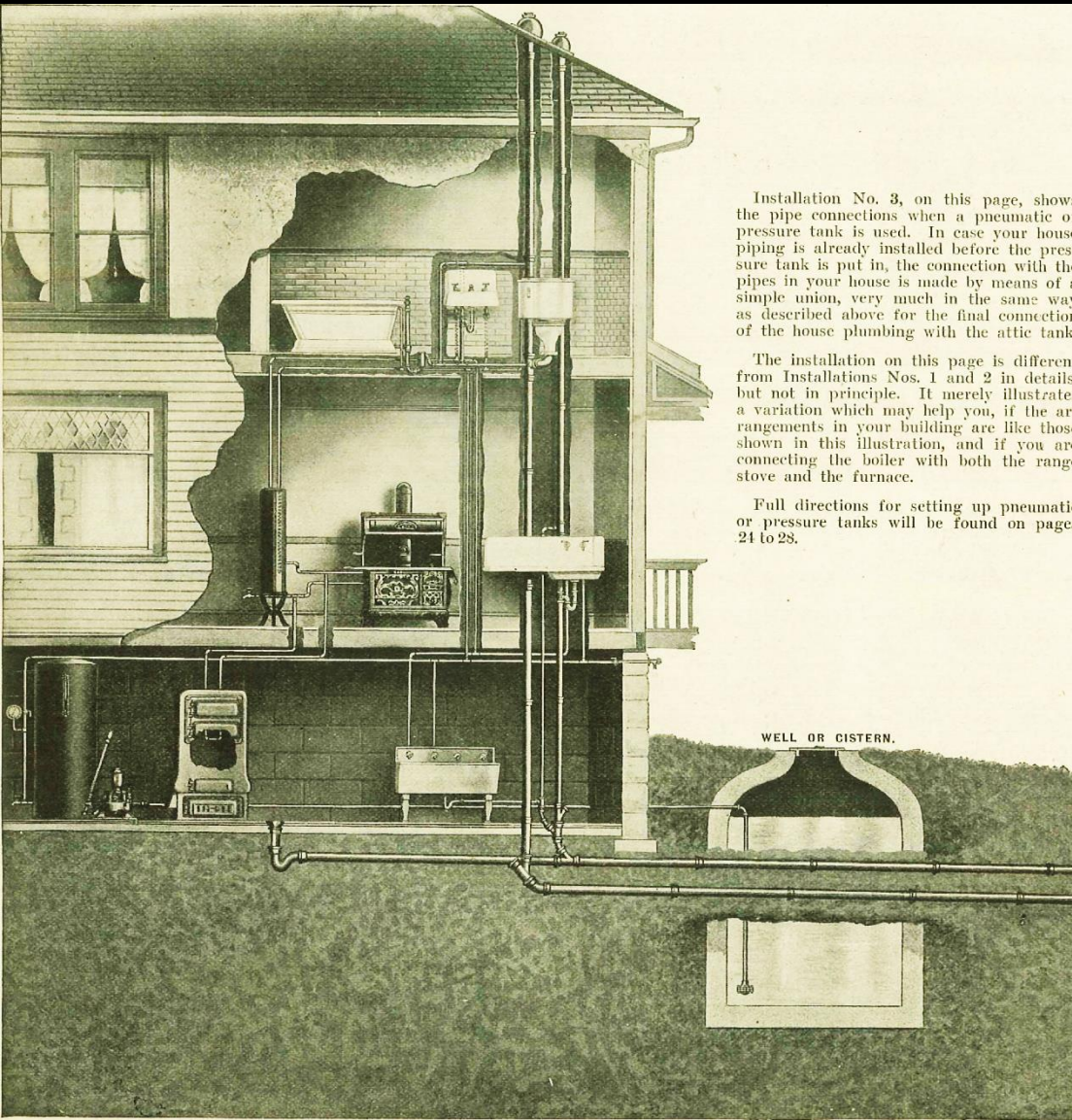
Although widely used in America, the siphon water-closet has only recently found its way to England. In spite of its acknowledged advantages, it is impossible to say to what extent it will gain ground in the face of competition from hundreds of existing closets. In order to reduce the noise of the usual wash-down closet with its flash tank, the space between closet and tank has recently been reduced in such a way that the tank is now placed directly behind the seat. This type is known as a combination closet. The reduced drop is replaced by a larger outlet. This type of closet seems to represent a version of the wash-down closet capable of competing in the best houses with the American siphon closet and the valve closet that is otherwise regarded as first-rate. But in spite of all this, water-closets remain capable of improvement, just as the closets

249-251: Hellyer's 'Optimus' valve closet
Section, front and back.



"Plumbers mediate between the pure and the abject. They order everyday fluids, they manage flow, they straighten things out and keep things clean. Sounding depths, righting columns, fixing pipes: plumbing leads to the bottom of things." -- from the introduction to *Plumbing* One of the fundamental tenets of modernism was its image of hygiene, its ideal of bringing cleanliness and order to the great unwashed, as evident in Adolf Loos's 1898 article, "Plumbers." Using Loos as a point of departure, the essays in this collection examine architecture through the multiple meanings inherent in plumbing--from the pipes of modern hygiene, to the plumb line of the right angle, to Marcel Duchamp's Ready-made urinal.

Essay titles include "Siegfried Giedion and the Fascination of the Tub," "The Pneumatic Bathroom," "Bathrooms and Kitchens: Cleaning House with Duchamp," "Architects' Bellies: The Plumbing of Masculine Conceptions," and, of course, Loos's "Plumbers." Among the contributors are Victor Burgin, Xavier Costa, Marco Frascari, Harry Francis Mallgrave, and Helen Molesworth.



Installation No. 3, on this page, shows the pipe connections when a pneumatic or pressure tank is used. In case your house piping is already installed before the pressure tank is put in, the connection with the pipes in your house is made by means of a simple union, very much in the same way as described above for the final connection of the house plumbing with the attic tank.

The installation on this page is different from Installations Nos. 1 and 2 in details, but not in principle. It merely illustrates a variation which may help you, if the arrangements in your building are like those shown in this illustration, and if you are connecting the boiler with both the range stove and the furnace.

Full directions for setting up pneumatic or pressure tanks will be found on pages 24 to 28.

WELL OR CISTERN.

MODERN PLUMBING



THE J. L. MOTT IRON WORKS











PETER BEHRENS







☞ ☞
DIE KÜNSTLER-KOLONIE IN DARMSTADT
BEEHRT SICH ZU DER AM 15. MAI
MORGENS 11 UHR STATTFINDENDEN
FEIERLICHEN ERÖFFNUNG DER
AUSSTELLUNG SEHR ERGEBENST
EINZULADEN





Århus Domkirke
Kirkelig til Søndag
Korngæst til kl. 18 Uhr
Kaffe og Kæde
Søndag - Brunch
ÅRÅS
KIRKE OG HUS







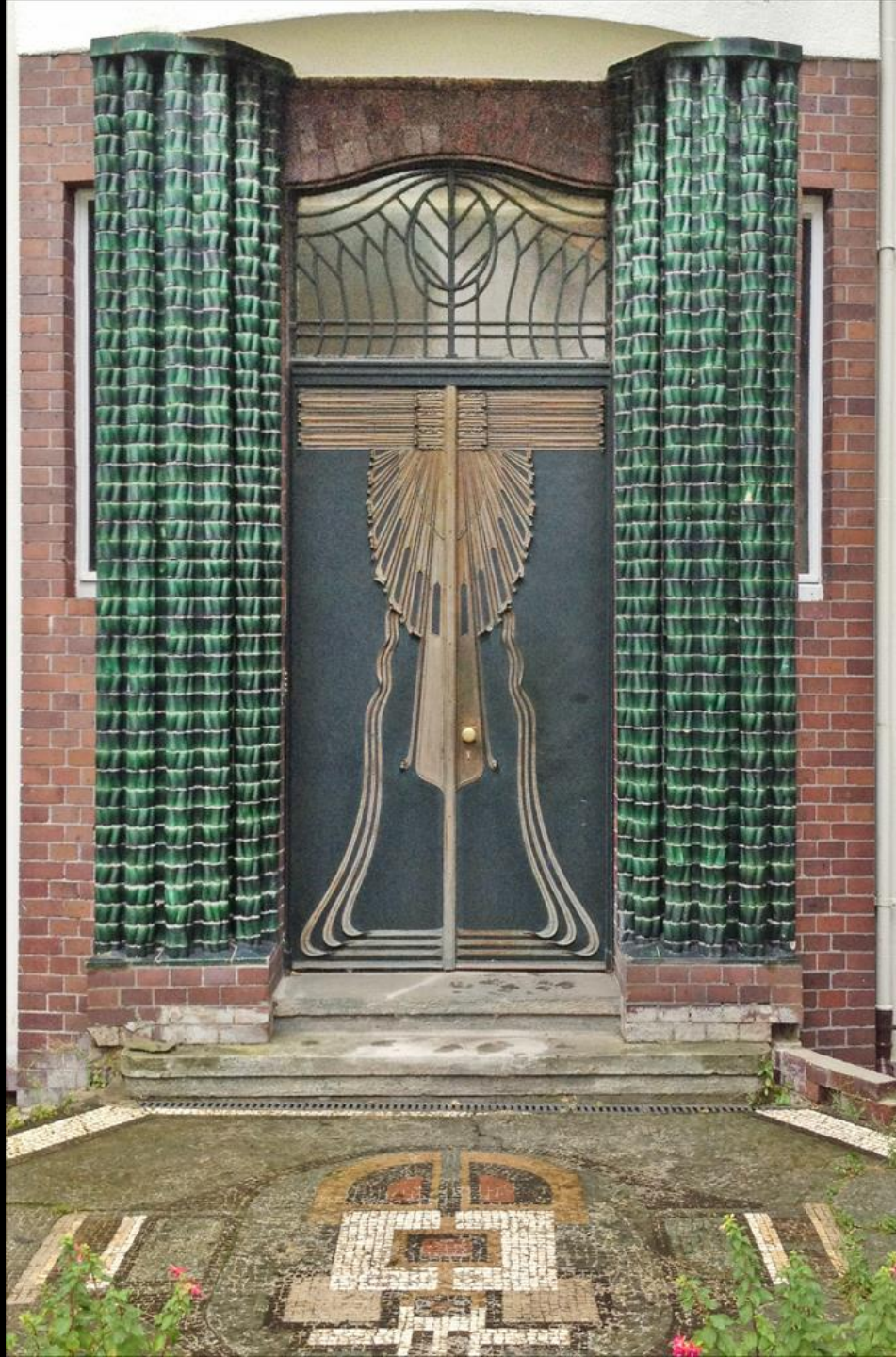


















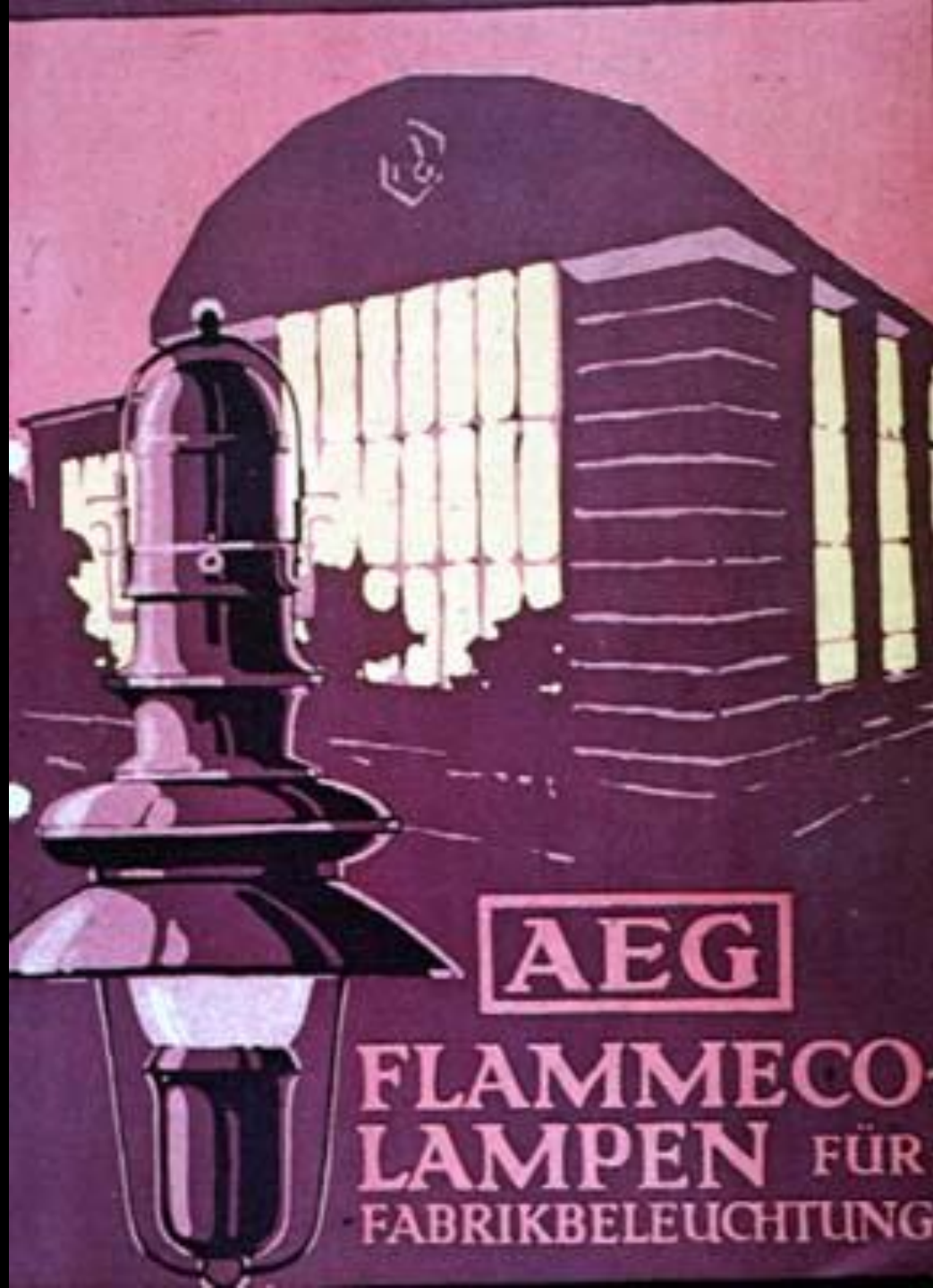
**ALLGEMEINE
ELEKTRICITÄTS
GESELLSCHAFT**



A·E·G·METALLFADENLAMPE

ZIRKA EIN WATT PRO KERZE





AEG

**FLAMMECO-
LAMPEN FÜR
FABRIKBELEUCHTUNG**



EISEN- und METALLFABRIK

Berchingsstraße
Hüttenstraße

3









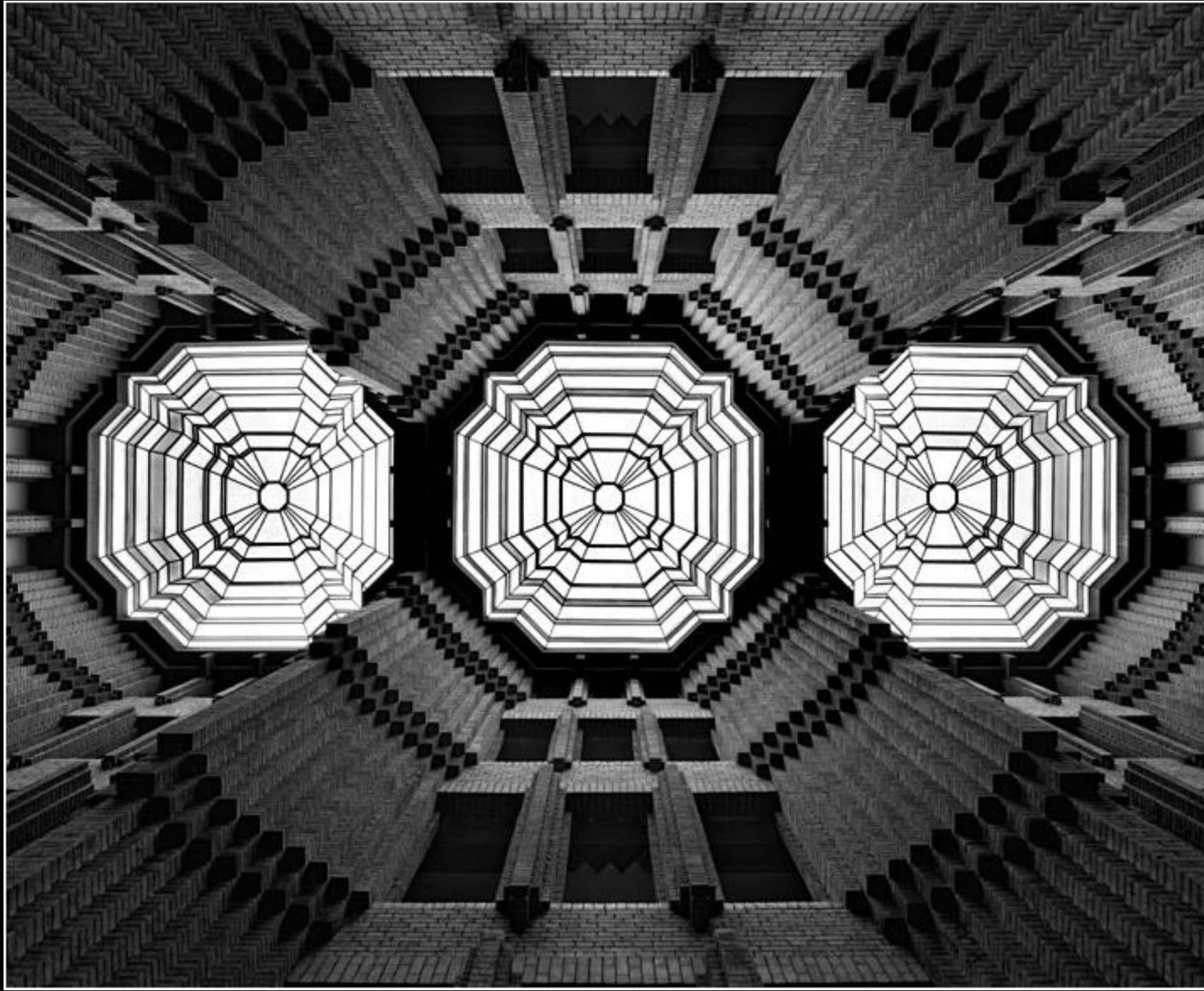


















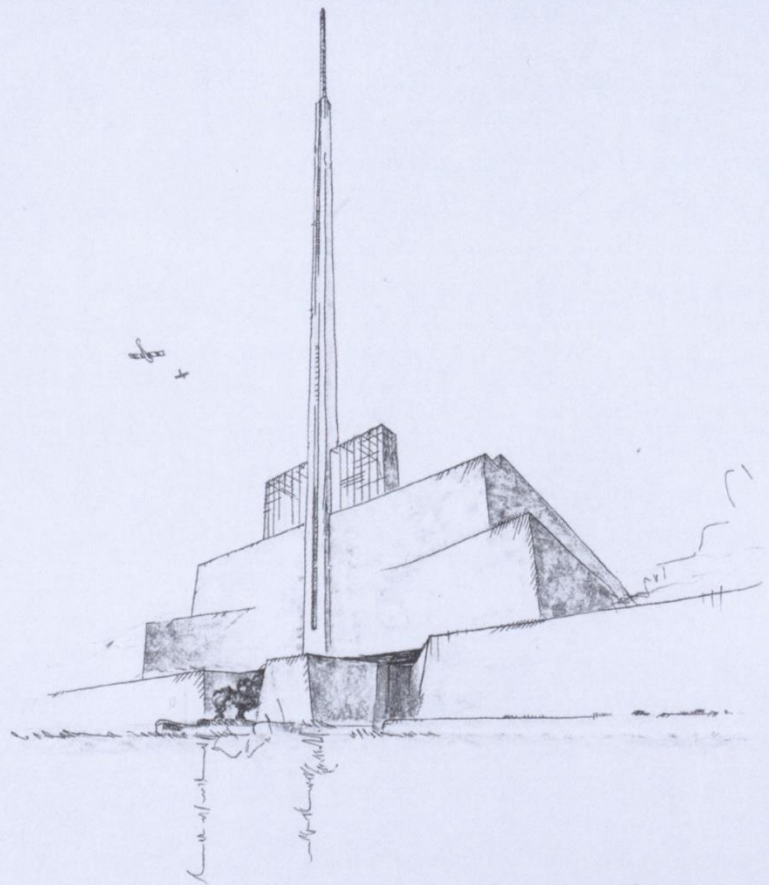
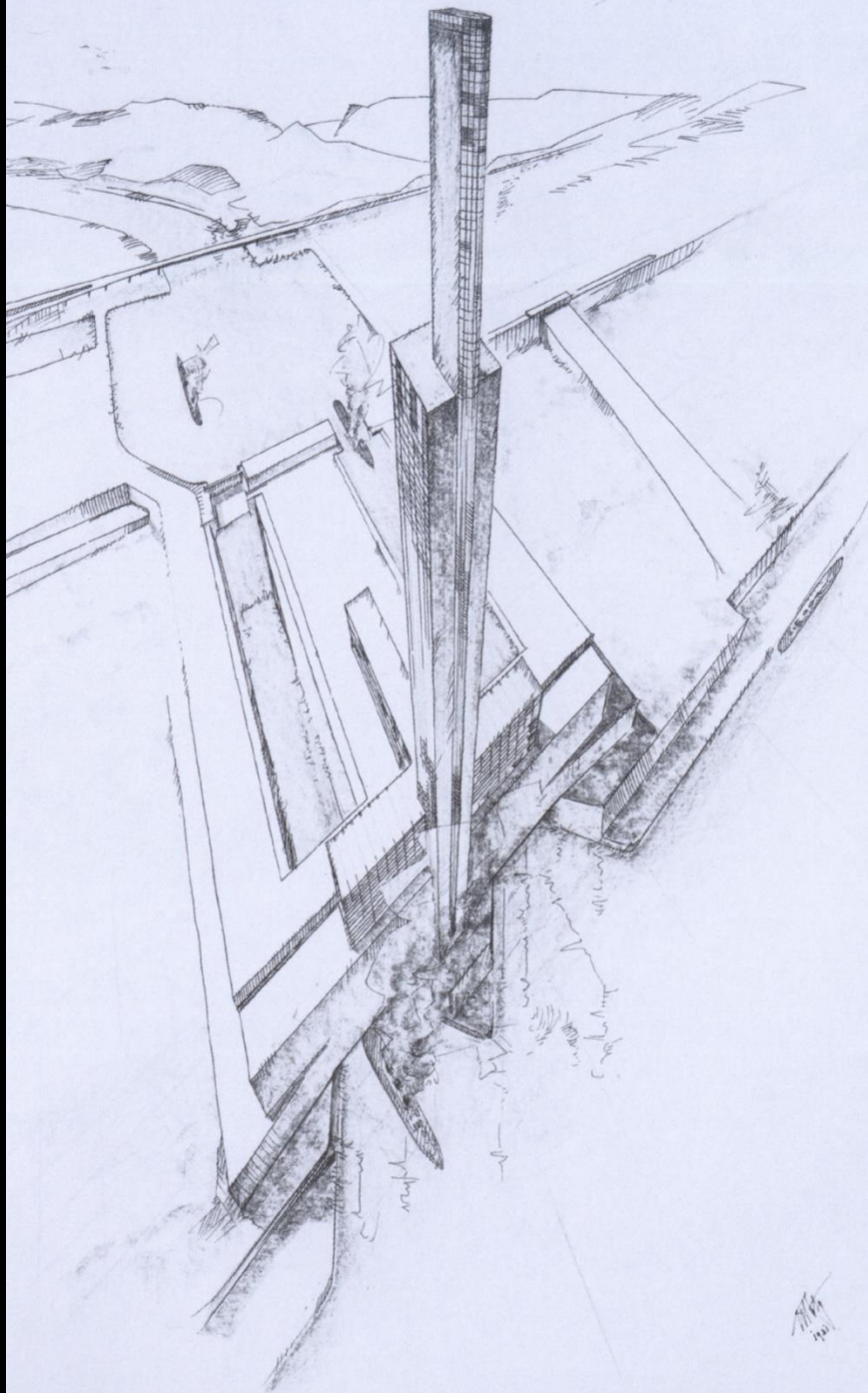






architekturgalerie am weißenhof







Atlantropa Project

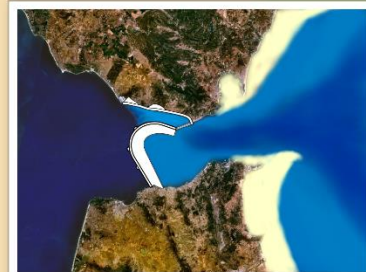
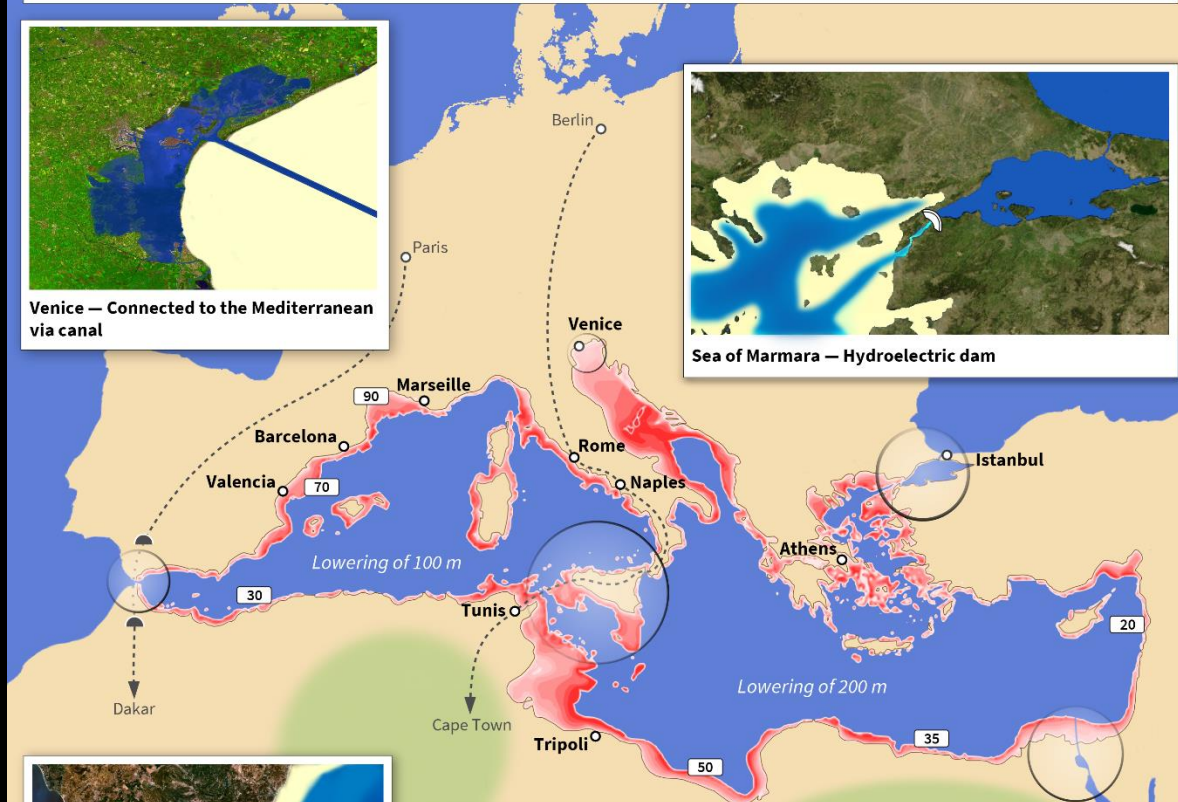
Planned by Herman Sörgel



Venice — Connected to the Mediterranean via canal



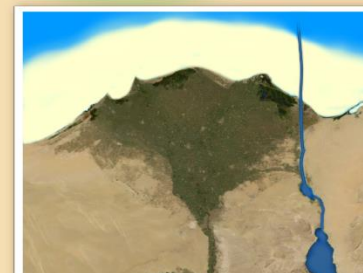
Sea of Marmara — Hydroelectric dam



Gibraltar — Main dam and power station



Sicily — Second dam to lower the sea level of the eastern Mediterranean



Egypt — Extension of the Suez Canal

Legend

- Planned rail link: Berlin -----//-----> Cape Town
- Planned irrigation area by desalination: (Green shaded area)
- Land reclamation in kilometres: (Box with 50)

